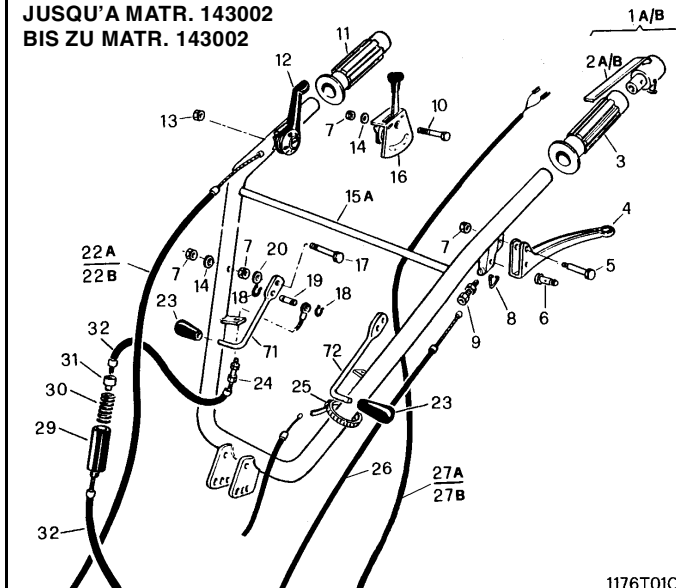


Mod. 1172 - 1176
ELENCO PARTI DI RICAMBIO
SPARE PARTS LIST
LISTE DES PIECES DE RECHANGE
ERSATZTEILLISTE

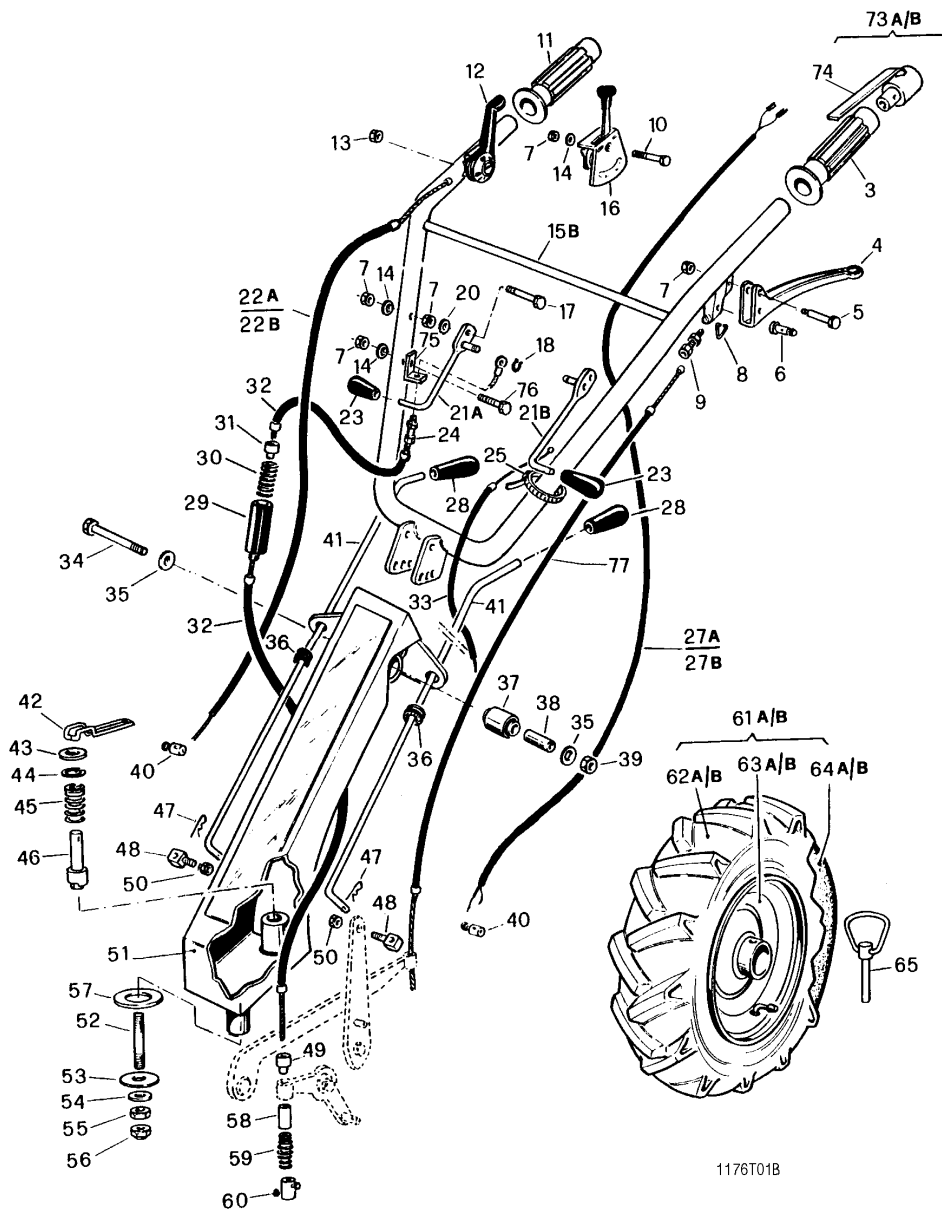
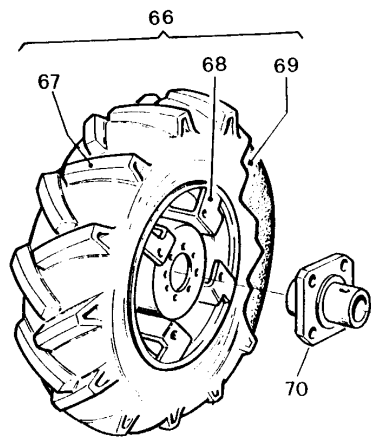
Tab. 1	STEGOLE DI GUIDA – <i>HANDLEBARS</i> – MANCHERONS – <i>FÜHRUNGSHOLM</i>	Rev. 9505
Tab. 2	CARTER – <i>CASE</i> – CARTER – <i>GEHÄUSE</i>	Rev. 9505
Tab. 3	TRASMISSIONE – <i>SHAFTING</i> – TRANSMISSION – <i>TRANSMISSION</i>	Rev. 9505
Tab. 4	DIFFERENZIALE – <i>DIFFERENTIAL</i> – DIFFERENTIAL – <i>DIFFERENTIAL</i>	Rev. 9310
Tab. 5	ACCESSORI – <i>IMPLEMENTS</i> – ACCESSOIRES – <i>NEBENSÄCHLICHKEITEN</i> (LOMBARDINI - ACME)	Rev. 9310
Tab. 6	ACCESSORI – <i>IMPLEMENTS</i> – ACCESSOIRES – <i>NEBENSÄCHLICHKEITEN</i> (RUGGERINI - INTERMOTOR)	Rev. 9310
Tab. 7	ACCESSORI – <i>IMPLEMENTS</i> – ACCESSOIRES – <i>NEBENSÄCHLICHKEITEN</i> (HONDA)	Rev. 9310
Tab. 8	ACCESSORI – <i>IMPLEMENTS</i> – ACCESSOIRES – <i>NEBENSÄCHLICHKEITEN</i> (BRIGGS & STRATTON)	Rev. 9505
Tab. 9	GRUPPO FRESA – <i>TILLER</i> – FRAISE – <i>FRÄSE</i> (4 T. – MICRO DIESEL)	Rev. 9505
Tab. 10	GRUPPO FRESA – <i>TILLER</i> – FRAISE – <i>FRÄSE</i> (DIESEL)	Rev. 9310
Tab. 11	AZIONAMENTO BARRA FALCIANTE – <i>BAR MOVEMENT</i> – MOUVEMENT DE LA BARRE – <i>MÄHBALKEN BETRIEB</i>	Rev. 9407
Tab. 12	BARRE FALCIANTI – <i>MOWING BARS</i> – BARRES DE COUPE – <i>MÄHBALKEN</i>	Rev. 9310

Tab. 1 - STEGOLE DI GUIDA - HANDLEBARS - MANCHERONS - FÜHRUNGSHOLM

FINO A MATRICOLA 143002
 TO S/N 143002
 JUSQU'À MATR. 143002
 BIS ZU MATR. 143002



1176T01C



1176T01B

Tab. 1 - STEGOLE DI GUIDA – HANDLEBARS – MANCHERONS – FÜHRUNGSHOLM

REF.	Q.	COD.	DESCRIZIONE	DESCRIPTION	DESCRIPTION	BENENNUNG
01a	01	14660238	DISPOS. MOTORSTOP (diesel)	MOTORSTOP, ASS.Y (diesel)	MOTORSTOP COMPLET (diesel)	MOTORSTOP KOMPLETT (diesel)
01b	01	14660239	DISPOS. MOTORSTOP (benz.)	MOTORSTOP, ASS.Y (gasoline)	MOTORSTOP COMPLET (benz.)	MOTORSTOP KOMPLETT (benzin)
02a	01	14660226	LEVA MOTORSTOP (diesel)	LEVER (diesel)	LEVIER (diesel)	HEBEL (diesel)
02b	01	14660225	LEVA MOTORSTOP (benzina)	LEVER (gasoline)	LEVIER (benzine)	HEBEL (benzin)
03	01	14680368	MANOPOLA MOTORSTOP	GRIP, MOTORSTOP	POIGNEE MOTORSTOP	MOTORSTOP GRIFF
04	01	14660221	LEVA	LEVER	LEVIER	HEBEL
05	01	14660235	VITE	SCREW	VIS	SCHRAUBE
06	01	14660241	MORSETTO	CLAMP	SERRE-CABLE	SEILKLEMME
07	—	19954253	DADO	NUT	ECROU	MUTTER
08	01	14660233	BLOCCAGGIO	LOCK	BLOC	BLOCKIERUNG
09	01	14660260	VITE REGISTRO	SCREW, ADJUSTMENT	VIS DE REGLAGE	STELLSCHRAUBE
10	01	19952616	VITE (Briggs & Stratton)	SCREW (Briggs & Stratton)	VIS (Briggs & Stratton)	SCHRAUBE (Briggs & Stratton)
11	01	14680364	MANOPOLA	GRIP	POIGNEE	GRIF
12	01	14660203	MANETTINO GAS	THROTTLE LEVER	MANETTE	GASHEBEL
13	01	19954206	DADO	NUT	ECROU	MUTTER
14	—	19955051	RONDELLA	PLAIN WASHER	RONDELLE	SCHEIBE
15a	01	15765067	STEGOLE (fino a matr. 143002)	HANDLEBARS (to s/n 143002)	MANCHERONS (jusqu'a m. 143002)	FÜHRUNGSHOLM (bis zu m.143002)
15b	01	15765143	STEGOLE (da matricola 143003)	HANDLEBARS (since s/n 143003)	MANCHERONS (des matr. 143003)	FÜHRUNGSHOLM (bei zu m. 143003)
16	01	14660404	ACCELERATORE (B. & S.)	THROTTLE (B.&S.)	ACCELERATEUR (B. & S.)	GASHEBEL (B. & S.)
17	01	15765081	VITE	SCREW	VIS	SCHRAUBE
18	02	19955508	ANELLO ELASTICO	LOCKRING	ARRETOIR	SICHERUNGSRING
19	01	15205033	PERNO (fino ad esaurimento)	PIN (to seel out)	AXE (jusqu'a epuisement)	BOLZEN (bis zu ausverkauf)
20	01	19955406	ROSETTA ELASTICA	SPRING WASHER	RONDELLE ELASTIQUE	FEDERSCHEIBE
21a	01	15225061	LEVA DX	LEVER R.H.	LEVIER D.	HEBEL R.
21b	01	15575082	LEVA SX	LEVER L.H.	LEVIER G.	HEBEL L.
22a	01	14660410	TRASMISSIONE GAS (Ruggerini)	THROTTLE WIRE, ASS.Y (Rugg.)	CABLE GAS COMPLET (Rug.)	GAS-SEILZUG KOMPLETT (Rugg.)
22b	01	14660415	TRASMISSIONE GAS (Int.-Honda)	THROTTLE WIRE, ASS.Y (Int.-H.)	CABLE GAS COMPLET (Int.-H.)	GAS-SEILZUG KOMPLETT (Int.-H.)
23	01	14660181	POMELLO	KNOB	BOUTON	KNEBELGRIFF
24	01	14660257	VITE REGISTRO	SCREW, ADJUSTMENT	VIS DE REGLAGE	STELLSCHRAUBE
25	06	14680801	FASCETTA	COLLAR	COLLIER	SCHLAUCHKLEMME
26	01	14660519	TRASMISSIONE FRIZIONE	CLUTCH WIRE ASS.Y	CABLE COMPLET	SEILZUG KOMPLETT
27a	01	14660384	TRASSMISS. MOTORSTOP (diesel)	WIRE ASS.Y MOTORS. (diesel)	CABLE COMP. MOTORS. (dies.)	SEILZUG KOMP. MOTORS. (dies.)
27b	01	14670102	TRASSMISS. MOTORSTOP (benzin.)	ELECTRIC WIRE MOTORS. (gas.)	CABLE ELECTRIQUE MOT. (ben.)	ELEKTRISCHE KABEL MOT. (benz.)
28	02	14660180	POMELLO	KNOB	BOUTON	KNEBELGRIFF
29	01	15215253	BUSSOLA	BUSH	DOUILLE	BÜCHSE
30	01	15001044	MOLLA	SPRING	RESSORT	FEDER
31	01	14660232	BARILOTTO	BUSHING	BARILLET	ZYLINDER
32	01	14660523	TRASMISSIONE (retromarcia)	WIRE, ASS.Y (reverse speed)	CABLE COMPLET (marche arriere)	SEILZUG KOMP. (rückswärt)
33	01	14660521	TRASMISSIONE (differenziale)	WIRE, ASS.Y (differential)	CABLE COMPLET (differential)	SEILZUG KOMP. (differential)
34	02	19952643	VITE	SCREW	VIS	SCHRAUBE
35	04	19955022	RONDELLA	PLAIN WASHER	RONDELLE	SCHEIBE
36	02	14680103	GOMMINO	RUBBER	CAOUTCHOUC	GUMMI

Tab. 1 - STEGOLE DI GUIDA – HANDLEBARS – MANCHERONS – FÜHRUNGSHOLM

REF.	Q.	COD.	DESCRIZIONE	DESCRIPTION	DESCRIPTION	BENENNUNG
37	02	14680406	SILENTBLOCK	SILENTBLOCK	SILENTBLOCK	SILENTBLOCK
38	02	15755021	DISTANZIALE	SPACER	ENTRETOISE	DISTANZSTUCK
39	02	19954208	DADO	NUT	ECROU	MUTTER
40	02	14660242	MORSETTO (diesel)	CLAMP (diesel)	SERRE-CABLE (diesel)	SEILKLEMME (diesel)
41	02	15765066	ASTA	ROD	TIGE	STANGE
42	01	15755049	MOLLA	SPRING	RESSORT	FEDER
43	01	19955017	RONDELLA	PLAIN WASHER	RONDELLE	SCHEIBE
44	01	19955620	ANELLO ELASTICO	LOCKRING	ARRETOIR	SICHERUNGSRING
45	01	15047037	MOLLA	SPRING	RESSORT	FEDER
46	01	15765051	PERNO	PIN	AXE	BOLZEN
47	02	15001081	SPINA A MOLLA	SPRING CLIP	GOUPILLE RAPIDE	VORSTECKER
48	02	15545057	FERMAFILO	FASTENER	SERRECABLE	SEILKLEMME
49	01	14660250	BUSSOLA	BUSH	DUILLE	BÜCHSE
50	02	19954254	DADO	NUT	ECROU	MUTTER
51	01	15765049	SUPPORTO	SUPPORT	SUPPORT	HALTERUNG
52	01	15004030	PRIGIONIERO	STUD BOLD	GOUJON	STIFTSCHRAUBE
53	01	19955020	RONDELLA	PLAIN WASHER	RONDELLE	SCHEIBE
54	01	19955412	ROSETTA ELASTICA	SPRING WASHER	RONDELLE ELASTIQUE	FEDERSCHEIBE
55	01	19954047	DADO	NUT	ECROU	MUTTER
56	01	19954256	DADO	NUT	ECROU	MUTTER
57	01	19956061	SPESSORE ACCIAIO	SHIM (STEEL)	CALE D'EPaisseur (ACIER)	DISTANZSCHIEBE (STAHL)
58	01	15765079	DISTANZIALE	SPACER	ENTRETOISE	DISTANZSTUCK
59	01	15765080	MOLLA	SPRING	RESSORT	FEDER
60	01	14660243	MORSETTO	CLAMP	SERRE-CABLE	SEILKLEMME
61a	02	12320411	RUOTA (3.50x6") (specificare se DX o SX)	WHEEL R.H. (3.50x6") (specify if left or right)	ROUE D. (3.50x6") (specifier si droite ou gauche)	RAD R. (3.50x6") (angeben ob rechts oder links)
61b	02	12321015	RUOTA (4.00x8") (specificare se DX o SX)	WHEEL R.H. (4.00x8") (specify if left or right)	ROUE D. (4.00x8") (specifier si droite ou gauche)	RAD R. (4.00x8") (angeben ob rechts oder links)
62a	02	14685511	PNEUMATICO (3.50x6")	TYRE (3.50x6")	PNEU (3.50x6")	BEREIFUNG (3.50x6")
62b	02	14685516	PNEUMATICO (4.00x8")	TYRE (4.00x8")	PNEU (4.00x8")	BEREIFUNG (4.00x8")
63a	02	14600411	DISCO RUOTA (3.50x6")	RIM (3.50x6")	JANTE (3.50x6")	FELGE (3.50x6")
63b	02	14600111	DISCO RUOTA (4.00x8")	RIM (4.00x8")	JANTE (4.00x8")	FELGE (4.00x8")
64a	02	14684411	CAMERA D'ARIA (3.50x6")	TUBE (3.50x6")	CHAMBRE A AIR (3.50x6")	SCHLAUCH (3.50x6")
64b	02	14684412	CAMERA D'ARIA (4.00x8")	TUBE (4.00x8")	CHAMBRE A AIR (4.00x8")	SCHLAUCH (4.00x8")
65	02	15001108	SPINA A MOLLA	SPRING CLIP	GOUPILLE RAPIDE	VORSTECKER
66	02	12322324	RUOTA (4.00x10") (specificare se DX o SX)	WHEEL R.H. (4.00x10") (specify if left or right)	ROUE D. (4.00x10") (specifier si droite ou gauche)	RAD R. (4.00x10") (angeben ob rechts oder links)
67	02	14685524	PNEUMATICO (4.00x10")	TYRE (4.00x10")	PNEU (4.00x10")	BEREIFUNG (4.00x10")
68	02	14602111	DISCO RUOTA (4.00x10")	RIM (4.00x10")	JANTE (4.00x10")	FELGE (4.00x10")
69	02	14684424	CAMERA D'ARIA (4.00x10")	TUBE (4.00x10")	CHAMBRE A AIR (4.00x10")	SCHLAUCH (4.00x10")
70	02	15761062	MOZZO	HUB	MOYEU	NABE
71	01	-----	SOSTITUITO DA REF. 21a	REPLACED BY REF. 21a	SUBSTITUÉE PAR REF. 21a	ERSETZ DURCH REF. 21a

Tab. 1 - STEGOLE DI GUIDA – HANDLEBARS – MANCHERONS – FÜHRUNGSHOLM

REF.	Q.	COD.	DESCRIZIONE	DESCRIPTION	DESCRIPTION	BENENNUNG
72	01	————	SOSTITUITO DA Ref. 21b	REPLACED BY Ref. 21b	SUBSTITUÉE PAR Ref. 21b	ERSETZ DURCH Ref. 21b
73a	01	14660238	DISP. MOTORSTOP (diesel) (da matricola 143003)	MOTORSTOP, ASS.Y (diesel) (since s/n 143003)	MOTORSTOP COMPLET (diesel) (des matr. 143003)	MOTORSTOP KOMPLETT (diesel) (bei zu matr. 143003)
73b	01	14660239	DISP. MOTORSTOP (benzina) (da matricola 143003)	MOTORSTOP, ASS.Y (gasoline) (since s/n 143003)	MOTORSTOR COMPLET (benz.) (des matr. 143003)	MOTORSTOP KOMPLETT (benzin) (bei zu matr. 143003)
74	01	14660266	LEVA MOTORSTOP (da matricola 143003)	LEVER (since s/n 143003)	LEVIER (des matr. 143003)	HEBEL (bei zu matr. 143003)
75	—	15765139	FERMAFILO (da matricola 143003)	FASTENER (since s/n 143003)	SERRECABLE (des matr. 143003)	SEILKLEMME (bei zu matr. 143003)
76	—	19952611	VITE	SCREW	VIS	SCHRAUBE
77	01	14660520	TRASMISSIONE (da matricola 143003)	WIRE, ASS.Y (since s/n 143003)	CABLE COMPLET (des matr. 143003)	SEILZUG KOMP. (bei zu matr. 143003)

Tab. 2 - CARTER - CASE - CARTER - GEHÄUSE

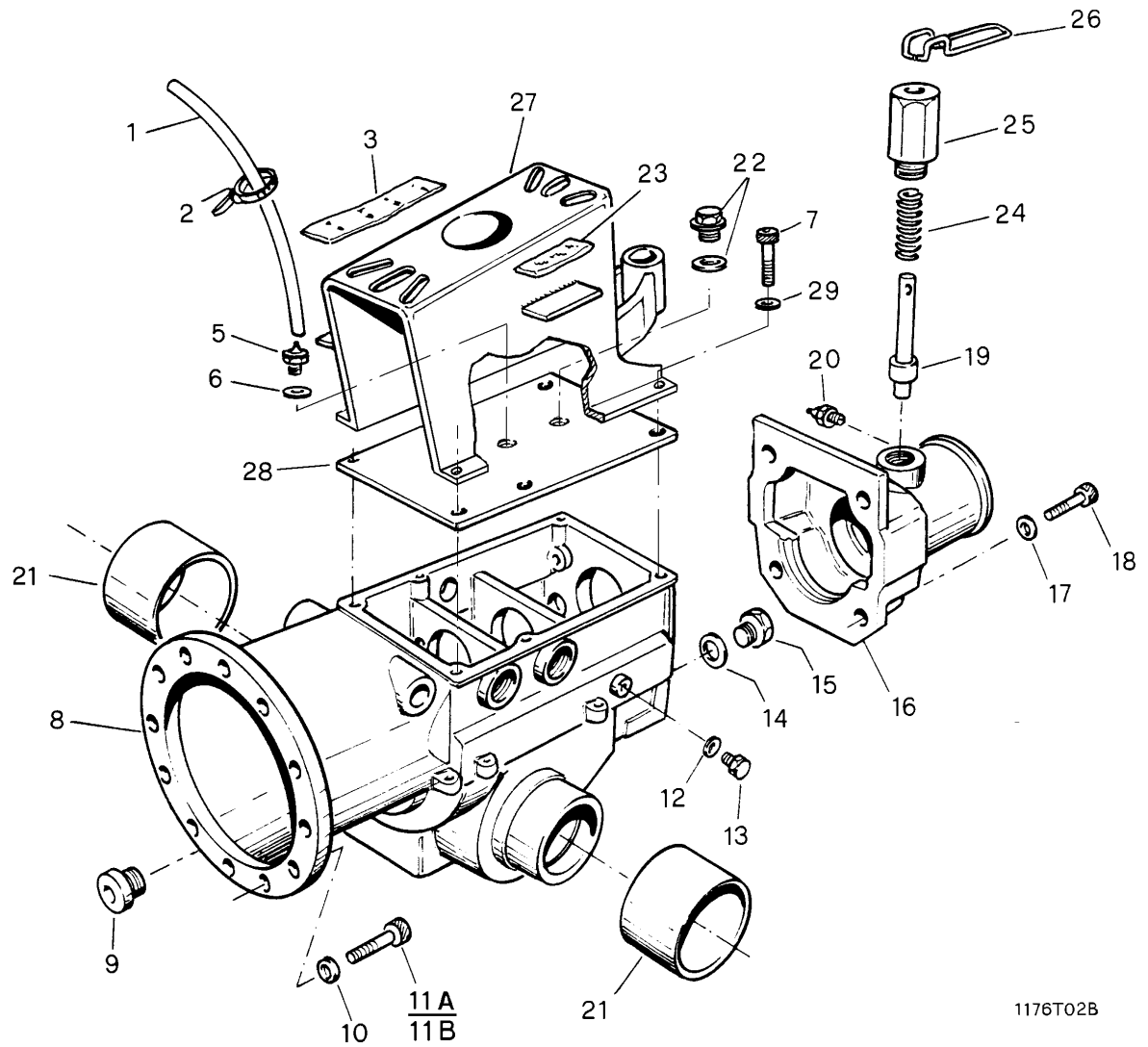
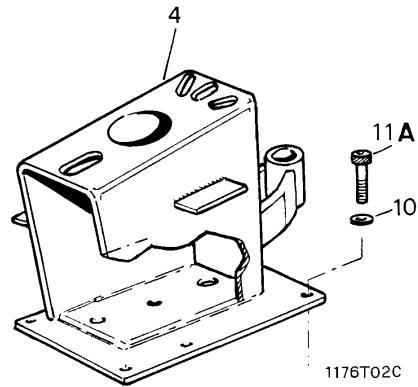
COPERCHIO - COVER - COUVERCLE - DECKEL

SOSTITUITO DA REF. 27 - 28

REPLACED BY REF. 27 - 28

SUBSTITUÉE PAR REF. 27 - 28

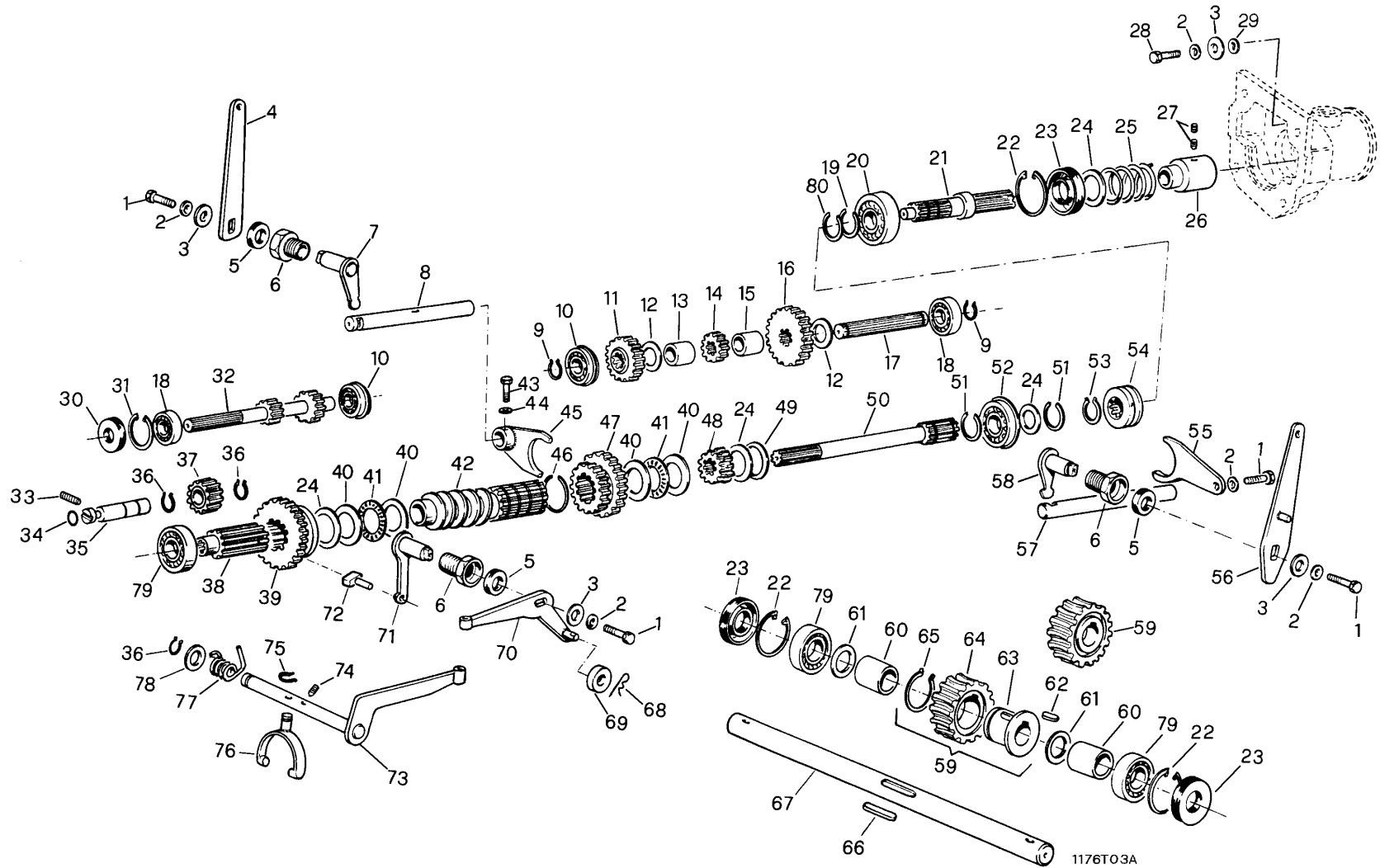
ERSETZ DURCH REF. 27 - 28



Tab. 2 - CARTER - CASE - CARTER - GEHÄUSE

REF.	Q.	COD.	DESCRIZIONE	DESCRIPTION	DESCRIPTION	BENENNUNG
01	01	15766001	TUBO SFIATO	HOSE	TUYAU	ROHR
02	01	14680801	FASCETTA	STRAP	COLLIER	HALTERBAND
03	01	15002065	ETICHETTA	PLACARD	PLAQUETTE	SCHILD
04	01	15765053	FUORI PRODUZIONE (sostituito da ref. 27 - 28)	OUT OD PRODUCTION (replaced by ref. 27 - 28)	HORS PRODUCTION (substituée par ref. 27 - 28)	AUBER PRODUKTION (ersetzt durch ref. 27 - 28)
05	01	15045059	RACCORDO	NIPPLE	EMBOUT	NIPPLE
06	02	19956167	GUARNIZIONE	GASKET	JOINT	DICHTUNG
07	06	19952128	VITE	SCREW	VIS	SCHRAUBE
08	01	15762002	CARTER CAMBIO	CASE	CARTER	GEHÄUSE
09	01	15005007	TAPPO	PLUG	BOUCHON	STOPFEN
10	—	19955308	ROSETTA ELASTICA	SPRING WASHER	RONDELLE ELASTIQUE	FEDERSCHEIBE
11a	—	19952123	VITE (Inter., Rugg., Lombar.)	SCREW (Inter., Rugg., Lombar.)	VIS (Inter., Rugg., Lombar.)	SCHRAUBE (Inter., Rugg., Lombar.)
11b	—	19952128	VITE (B.&S., Honda)	SCREW (B.&S., Honda)	VIS (B.&S., Honda)	SCHRAUBE (B.&S., Honda)
12	01	19956164	GUARNIZIONE	GASKET	JOINT	DICHTUNG
13	01	19952705	VITE	SCREW	VIS	SCHRAUBE
14	01	19956110	GUARNIZIONE	GASKET	JOINT	DICHTUNG
15	01	15005013	TAPPO	PLUG	BOUCHON	STOPFEN
16	01	15761003	COPERCHIO	COVER	COUVERCLE	DECKEL
17	04	19955274	ROSETTA ELASTICA	SPRING WASHER	RONDELLE ELASTIQUE	FEDERSCHEIBE
18	04	19952129	VITE	SCREW	VIS	SCHRAUBE
19	01	15755059	PERNO	PIN	AXE	BOLZEN
20	01	19956203	INGRASSATORE	GREASE NIPPLE	GRAISSEUR	SCHMIERNIPPEL
21	02	15765075	PROTEZIONE	GUARD	PROTECTION	SCHUTZ
22	01	14660110	TAPPO	PLUG	BOUCHON	STOPFEN
23	01	15002066	ETICHETTA	PLACARD	PLAQUETTE	SCHILD
24	01	15001035	MOLLA	SPRING	RESSORT	FEDER
25	01	15755058	BOCCOLA	BUSH	DOUILLE	BÜCHSE
26	01	15755049	MOLLA	SPRING	RESSORT	FEDER
27	01	15765134	SUPPORTO STEGOLE	SUPPORT, HANDLEBARS	SUPPORT DU GUIDON	HALTERUNG
28	01	15765084	COPERCHIO	COVER	COUVERCLE	DECKEL
29	06	19955273	ROSETTA ELASTICA	SPRING WASHER	RONDELLE ELASTIQUE	FEDERSCHEIBE

Tab. 3 - CAMBIO DI VELOCITÀ - GEARBOX - CHANGEMENT DE VITESSE - GETRIEBE



1176T03A

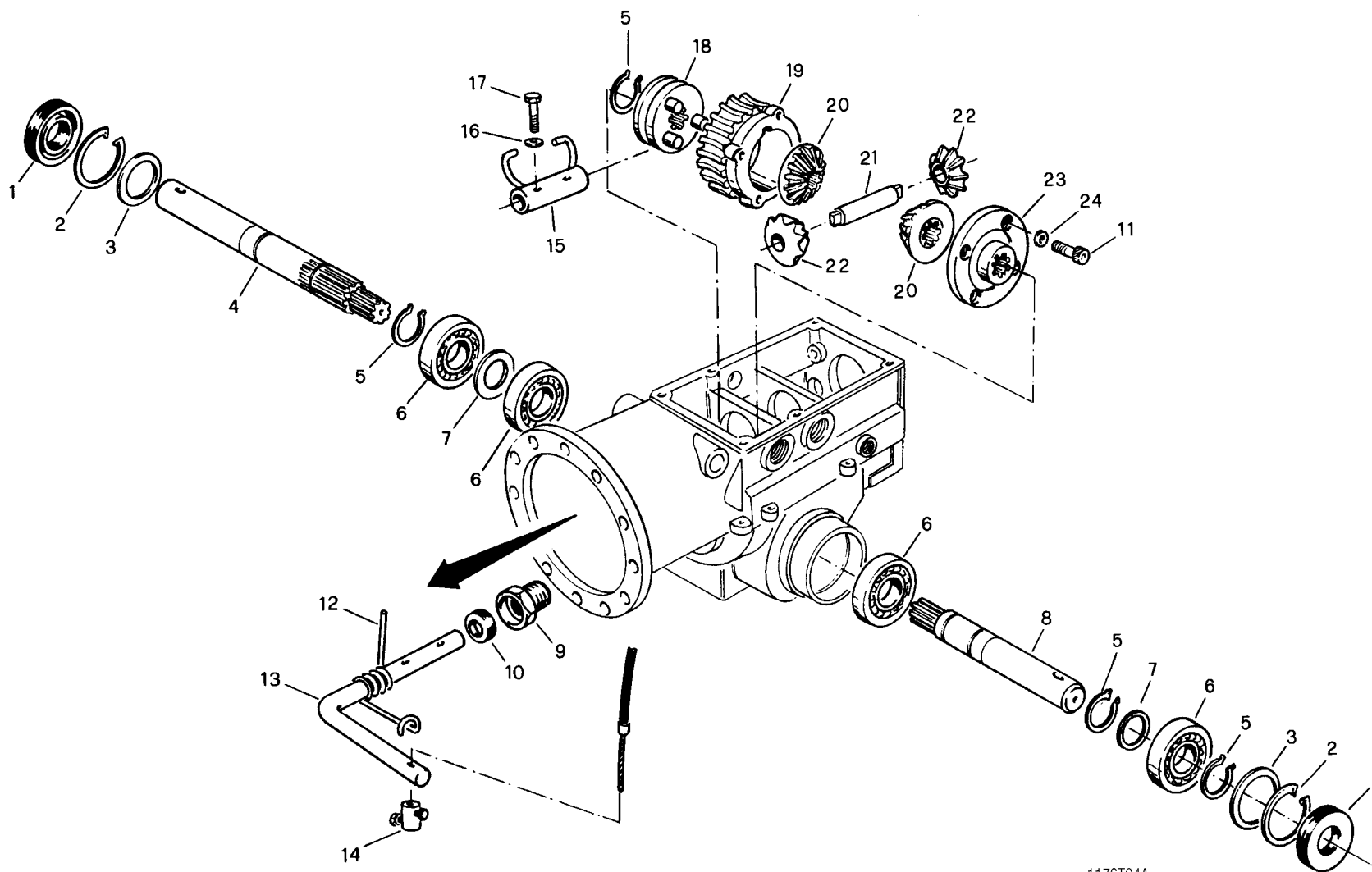
Tab. 3 – CAMBIO DI VELOCITÀ – GEARBOX – CHANGEMENT DE VITESSE – GETRIEBE

REF.	Q.	COD.	DESCRIZIONE	DESCRIPTION	DESCRIPTION	BENENNUNG
01	04	19952721	VITE	SCREW	VIS	SCHRAUBE
02	05	19955408	ROSETTA ELASTICA	SPRING WASHER	RONDELLE ELASTIQUE	FEDERSCHEIBE
03	04	19955009	RONDELLA	PLAIN WASHER	RONDELLE	SCHEIBE
04	01	15765042	LEVA EST. CAMBIO	LEVER	LEVIER	HEBEL
05	03	19922066	ANELLO DI TENUTA	SEAL RING	BAGUE D'ETANCHEITE	DICHTRING
06	03	15765058	BUSSOLA	BUSH	DUILLE	BÜCHSE
07	01	15765005	LEVA INT. CAMBIO	LEVER	LEVIER	HEBEL
08	01	15765028	ALBERO PER FORCELLA	SHAFT	ARBRE	WELLE
09	02	19955515	ANELLO ELASTICO	LOCKRING	ARRETOIR	SICHERUNGSRING
10	02	19900313	CUSCINETTO	BEARING	ROULEMENT	LAGER
11	01	15764023	INGRANAGGIO	GEAR	PIGNON	ZAHNRAD
12	02	19956013	SPESSORE	SHIM	CALE D'EPAISSEUR	DISTANZSCHEIBE
13	01	15765020	DISTANZIALE	SPACER	ENTRETOISE	DISTANZSTÜCK
14	01	15764024	INGRANAGGIO	GEAR	PIGNON	ZAHNRAD
15	01	15765021	DISTANZIALE	SPACER	ENTRETOISE	DISTANZSTÜCK
16	01	15764025	INGRANAGGIO	GEAR	PIGNON	ZAHNRAD
17	01	15764022	ALBERO	SHAFT	ARBRE	WELLE
18	02	19900311	CUSCINETTO	BEARING	ROULEMENT	LAGER
19	01	19955520	ANELLO ELASTICO	LOCKRING	ARRETOIR	SICHERUNGSRING
20	01	19900521	CUSCINETTO	BEARING	ROULEMENT	LAGER
21	01	15764012	ALBERO	SHAFT	ARBRE	WELLE
22	03	19955652	ANELLO ELASTICO	LOCKRING	ARRETOIR	SICHERUNGSRING
23	03	19922174	ANELLO DI TENUTA	SEAL RING	BAGUE D'ETANCHEITE	DICHTRING
24	04	19956029	SPESSORE	SHIM	CALE D'EPAISSEUR	DISTANZSCHEIBE
25	01	15001010	MOLLA	SPRING	RESSORT	FEDER
26	01	15544023	BOCCOLA	BUSH	DOUILLE	BÜCHSE
27	02	19952520	VITE	SCREW	VIS	SCHRAUBE
28	01	19952715	VITE	SCREW	VIS	SCHRAUBE
29	01	19955308	ROSETTA ELASTICA	SPRING WASHER	RONDELLE ELASTIQUE	FEDERSCHEIBE
30	01	19922061	ANELLO DI TENUTA	SEAL RING	BAGUE D'ETANCHEITE	DICHTRING
31	01	19955635	ANELLO ELASTICO	LOCKRING	ARRETOIR	SICHERUNGSRING
32	01	15764010	ALBERO	SHAFT	ARBRE	WELLE
33	01	19952534	VITE	SCREW	VIS	SCHRAUBE
34	01	19923090	ANELLO OR	O RING	BAGUE DE CAOTCHOU	O-RING
35	01	15764013	ALBERO	SHAFT	ARBRE	WELLE
36	03	19955514	ANELLO ELASTICO	LOCKRING	ARRETOIR	SICHERUNGSRING
37	01	15764026	INGRANAGGIO	GEAR	PIGNON	ZAHNRAD
38	01	15764015	BOCCOLA	BUSH	DOUILLE	BÜCHSE
39	01	15764011	INGRANAGGIO	GEAR	PIGNON	ZAHNRAD
40	04	19910004	RALLA	BEARING RING	CRAPAUDINE	LAGESCHALE
41	02	19910003	CUSCINETTO	BEARING	ROULEMENT	LAGER
42	01	15764019	VITE SENZA FINE	WORM SCREW	VITE SANS FIN	ENDLOSSCHRAUBE
43	01	19952113	VITE	SCREW	VIS	SCHRAUBE
44	01	19955306	ROSETTA ELASTICA	SPRING WASHER	RONDELLE ELASTIQUE	FEDERSCHEIBE
45	01	15765006	FORCELLA	FORK	FOURCHE	GABEL
46	01	15765046	MOLLA	SPRING	RESSORT	FEDER
47	01	15764018	INGRANAGGIO	GEAR	PIGNON	ZAHNRAD

Tab. 3 – CAMBIO DI VELOCITÀ – GEARBOX – CHANGEMENT DE VITESSE – GETRIEBE

REF.	Q.	COD.	DESCRIZIONE	DESCRIPTION	DESCRIPTION	BENENNUNG
48	01	15764016	PIGNONE	PINION	PIGNON	RITZEL
49	01	19956035	SPESSORE	SHIM	CALE D'EPAISSEUR	DISTANZSCHEIBE
50	01	15764014	ALBERO SECONDARIO	SHAFT	ARBRE	WELLE
51	02	19910820	ANELLO ELASTICO	LOCKRING	ARRETOIR	SICHERUNGSRING
52	01	19900523	CUSCINETTO	BEARING	ROULEMENT	LAGER
53	01	15765045	MOLLA	SPRING	RESSORT	FEDER
54	01	15764027	MANICOTTO	FITTING	MANCHON	MUFFE
55	01	15765007	FORCELLA	FORK	FOURCHE	GABEL
56	01	15765041	LEVA ESTERNA	LEVER	LEVKER	HEBEL
57	01	15765029	ALBERO	SHAFT	ARBRE	WELLE
58	01	15765005	LEVA INTERNA	LEVER	LEVIER	HEBEL
59	01	15764063	CORONA (completa)	RING GEAR (ass.y)	COURONNE DENTEE (complet)	ZAHNKRANZ (komplett)
60	02	15765039	DISTANZIALE	SPACER	ENTRETOISE	DISTANZSTÜCK
61	02	19956039	SPESSORE	SHIM	CALE D'EPAISSEUR	DISTANZSCHEIBE
62	01	19956318	CHIAVETTA	KEY	CLAVETTE	KEIL
63	—	—	NON FORNIBILE SING.	N/A	NON DISPONIBLE	NICHT VERFÜGBAR
64	—	—	NON FORNIBILE SING.	N/A	NON DISPONIBLE	NICHT VERFÜGBAR
65	01	19955545	ANELLO ELASTICO	LOCKRING	ARRETOIR	SICHERUNGSRING
66	01	19956327	CHIAVETTA	KEY	CLAVETTE	KEIL
67	01	15764061	ALBERO RUOTE	SHAFT	ARBRE	WELLE
68	01	15001081	SPINA A MOLLA	SPRING CLIP	GOUPILLE RAPIDE	VORSTECKER
69	01	10005003	DISTANZIALE	SPACER	ENTRETOISE	DISTANZSTÜCK
70	01	15765043	LEVA EST. INVERTITORE	LEVER	LEVIE	HEBEL
71	01	15765008	LEVA INT. INVERTITORE	LEVER	LEVIER	HEBEL
72	01	15204037	PATTINO	SLIDING SHOE	PATIN	GLEITSTÜCK
73	01	15765044	LEVA (FRIZIONE)	LEVER (CLUTCH)	LEVIER (EMBRAYAGE)	HEBEL (KUPPLUNG)
74	01	19952510	VITE	SCREW	VIS	SCHRAUBE
75	01	19955508	ANELLO ELASTICO	LOCKRING	ARRETOIR	SICHERUNGSRING
76	01	15053048	FORCELLA	FORK	FOURCHE	GABEL
77	01	15765056	MOLLA	SPRING	RESSORT	FEDER
78	01	19956008	SPESSORE	SHIM	CALE D'EPAISSEUR	DISTANZSCHEIBE
79	03	19900326	CUSCINETTO	BEARING	ROULEMENT	LAGER
80	01	19955519	ANELLO ELASTICO	LOCKRING	ARRETOIR	SICHERUNGSRING

Tab. 4 - DIFFERENZIALE - DIFFERENTIAL - DIFFERENTIAL - DIFFERENTIAL

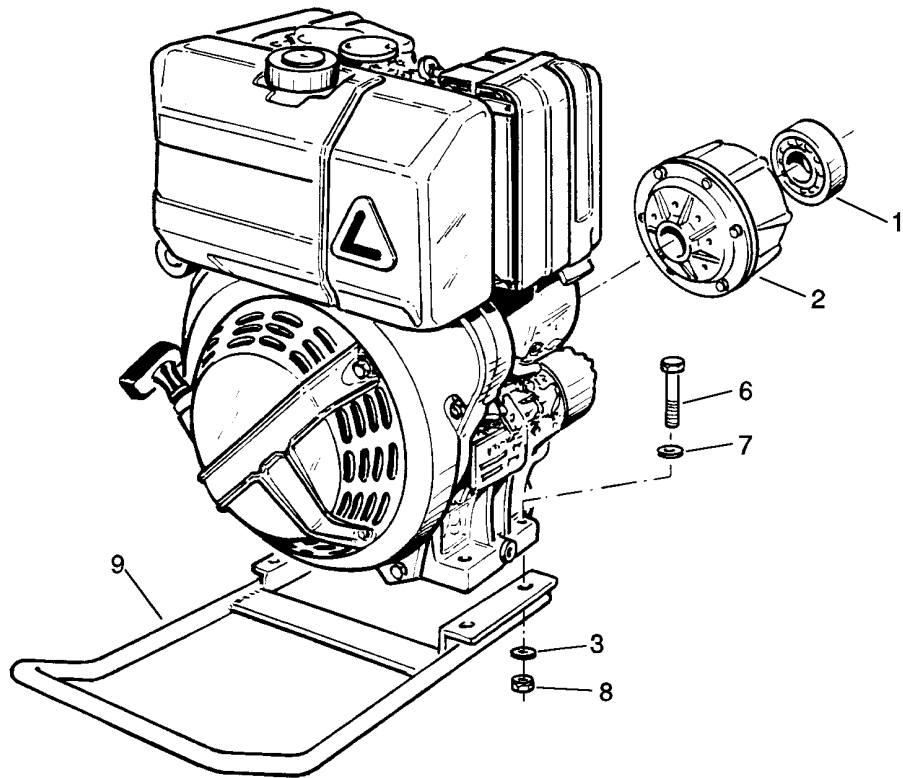


1176T04A

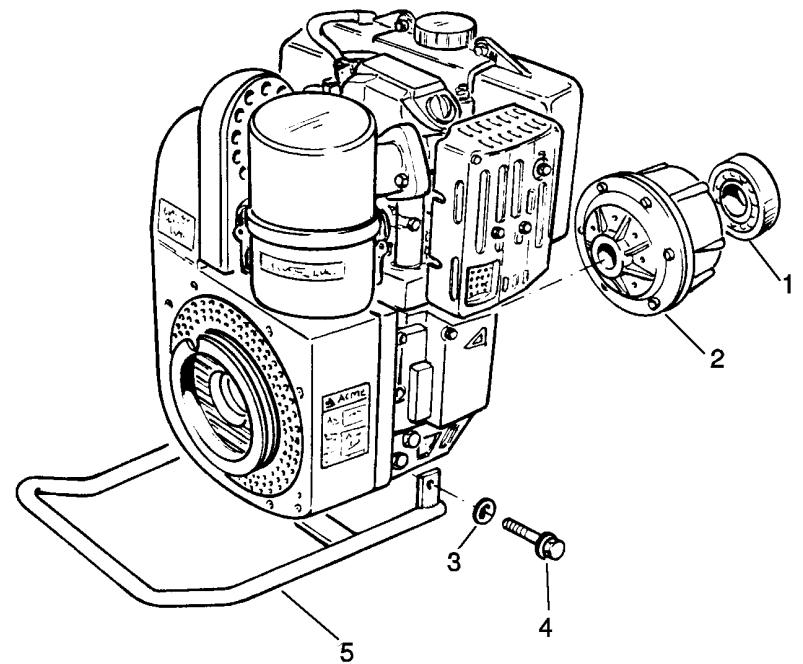
Tab. 4 – DIFFERENZIALE - DIFFERENTIAL - DIFFERENTIAL - DIFFERENTIAL

REF.	Q.	COD.	DESCRIZIONE	DESCRIPTION	DESCRIPTION	BENENNUNG
01	02	19921028	ANELLO DI TENUTA	SEAL RING	BAGUE D'ETANCHEITE	DICHTRING
02	02	19955652	ANELLO ELASTICO	LOCKRING	ARRETOIR	SICHERUNGSRING
03	02	19956052	SPESSORE	THICKNESS	CALE D'EPAISSEUR	DISTANZSCHEIBE
04	01	15764038	SEMIASSE DX	HALF-SHAFT R.H.	DEMI-ESSIU D.	ACHSWELLEN R.
05	04	19955525	ANELLO ELASTICO	LOCKRING	ARRETOIR	SICHERUNGSRING
06	04	19900326	CUSCINETTO	BEARING	ROULEMENT	LAGER
07	02	19956039	SPESSORE	THICKNESS	CALE D'EPAISSEUR	DISTANZSCHEIBE
08	01	15764037	SEMIASSE SX	HALF-SHAFT L.H.	DEMI-ESSIU G.	ACHSWELLEN L.
09	01	15765057	BOCCOLA	BUSH	DOUILLE	BÜCHSE
10	01	19922031	ANELLO DI TENUTA	SEAL RING	BAGUE D'ETANCHEITE	DICHTRING
11	04	19952114	VITE	SCREW	VIS	SCHRAUBE
12	01	15227056	MOLLA	SPRING	RESSORT	FEDER
13	01	15765059	LEVA	LEVER	LEVKER	HEBEL
14	01	14660243	MORSETTO DOPPIO	CLAMP	SERRE-CABLE	SEILKLEMME
15	01	15765009	FORCELLA	FORK	FOURCHE	GABEL
16	02	19955305	ROSETTA ELASTICA	SPRING WASHER	RONDELLE ELASTIQUE	FEDERSCHEIBE
17	02	19952713	VITE	SCREW	VIS	SCHRAUBE
18	01	15584014	INNESTO	DOG-CLAW	CLABOT	SCHIEBEKUPPLUNG
19	01	15764031	CORONA DENTATA	RING GEAR	COURONNE DENTEE	ZAHNKRANZ
20	02	15764034	INGRANAGGIO PLANETARIO	GEAR	ENGRENAGE	ZAHNRAD
21	01	15764036	PERNO	PIN	AXE	BOLZEN
22	02	15764033	INGRANAGGIO SATELLITE	GEAR	ENGRENAGE	ZAHNRAD
23	01	15764032	COPERCHIO	COVER	COUVERCLE	DECKEL
24	04	19955308	ROSETTA ELASTICA	SPRING WASHER	RONDELLE ELASTIQUE	FEDERSCHEIBE

Tab. 5 – ACCESSORI (LOMBARDINI - ACME) – IMPLEMENTS – ACCESSOIRES – NEBENSÄCHLICHKEITEN



Motore LOMBARDINI 15LD 315



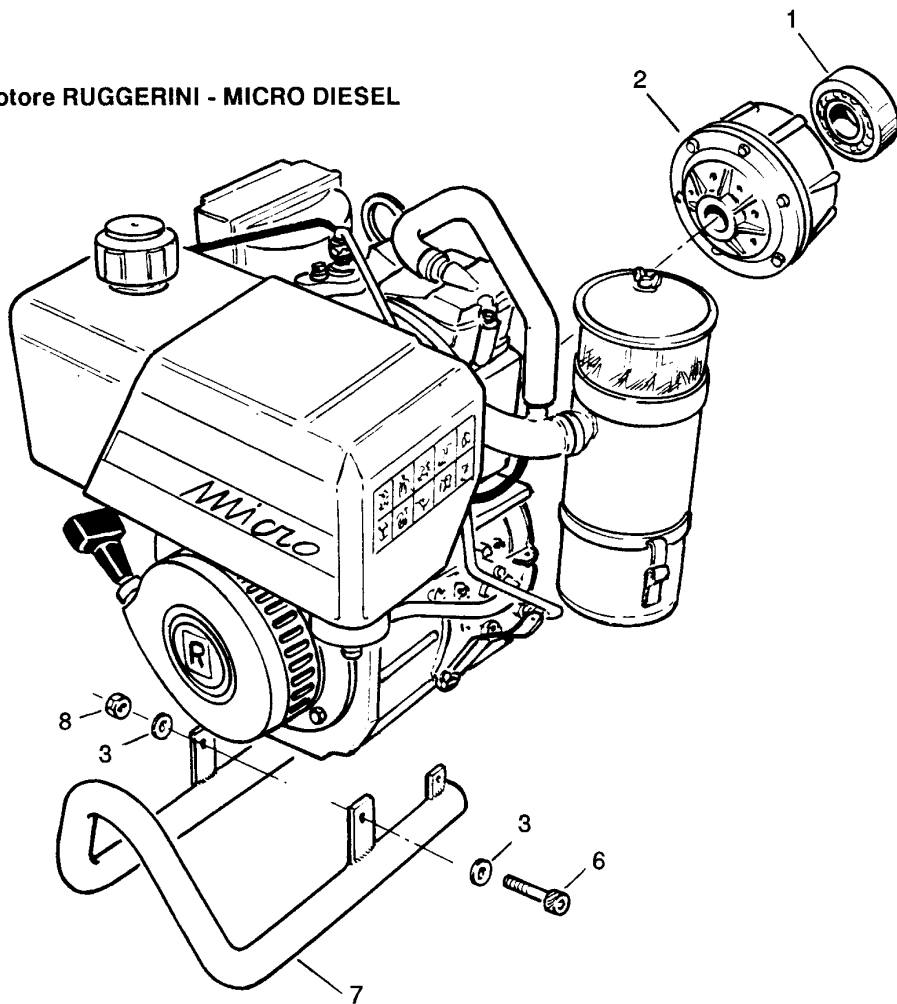
Motore ACME ADX 300 DIESEL

Tab. 5 – ACCESSORI (LOMBARDINI - ACME) – IMPLEMENTS – ACCESSOIRES – NEBENSÄCHLICHKEITEN

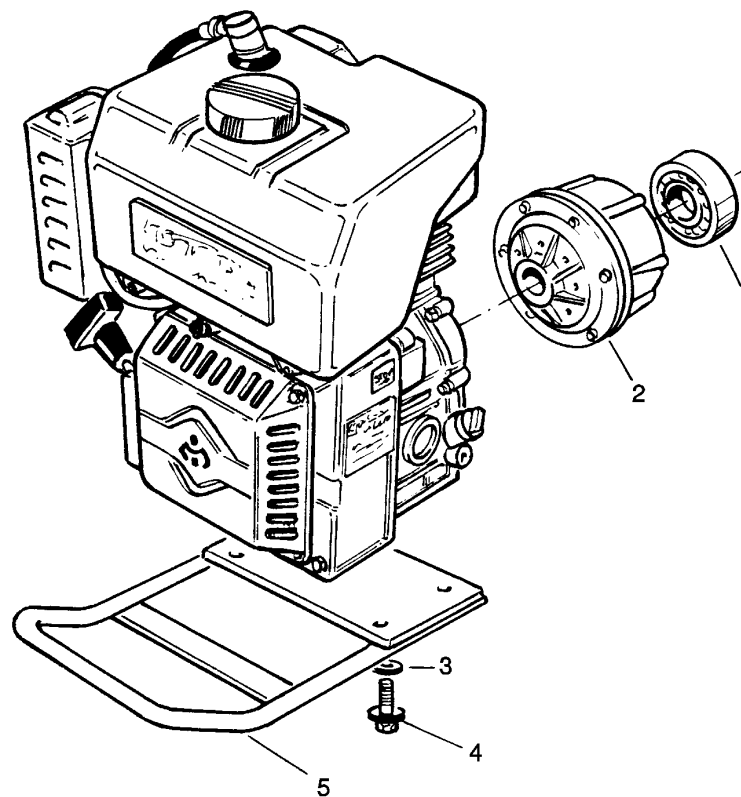
REF.	Q.	COD.	DESCRIZIONE	DESCRIPTION	DESCRIPTION	BENENNUNG
01	01	19900222	CUSCINETTO	BEARING	ROULEMENT	LAGER
02	01	14610356	FRIZIONE CONICA	CLUTCH, ASS.Y	EMBAYAGE COMPLET	KUPPLUNG SGRUPPE
03	—	19955273	ROSETTA ELASTICA	SPRING WASHER	RONDELLE ELASTIQUE	FEDERSCHEIBE
04	—	19952721	VITE	SCREW	VIS	SCHRAUBE
05	01	15007039	PARAURTI	BUMPER	PARE-CHOCS	STOSSTANGE
06	04	19952612	VITE	SCREW	VIS	SCHRAUBE
07	08	19955052	RONDELLA	PLAIN WASHER	RONDELLE	SCHEIBE
08	04	19954254	DADO	NUT	ECROU	MUTTER
09	01	15007042	PARAURTI	BUMPER	PARE-CHOCS	STOSSTANGE

Tab. 6 – ACCESSORI (RUGGERINI - INTERMOTOR) – IMPLEMENTS – ACCESSOIRES – NEBENSÄCHLICHKEITEN

Motore RUGGERINI - MICRO DIESEL



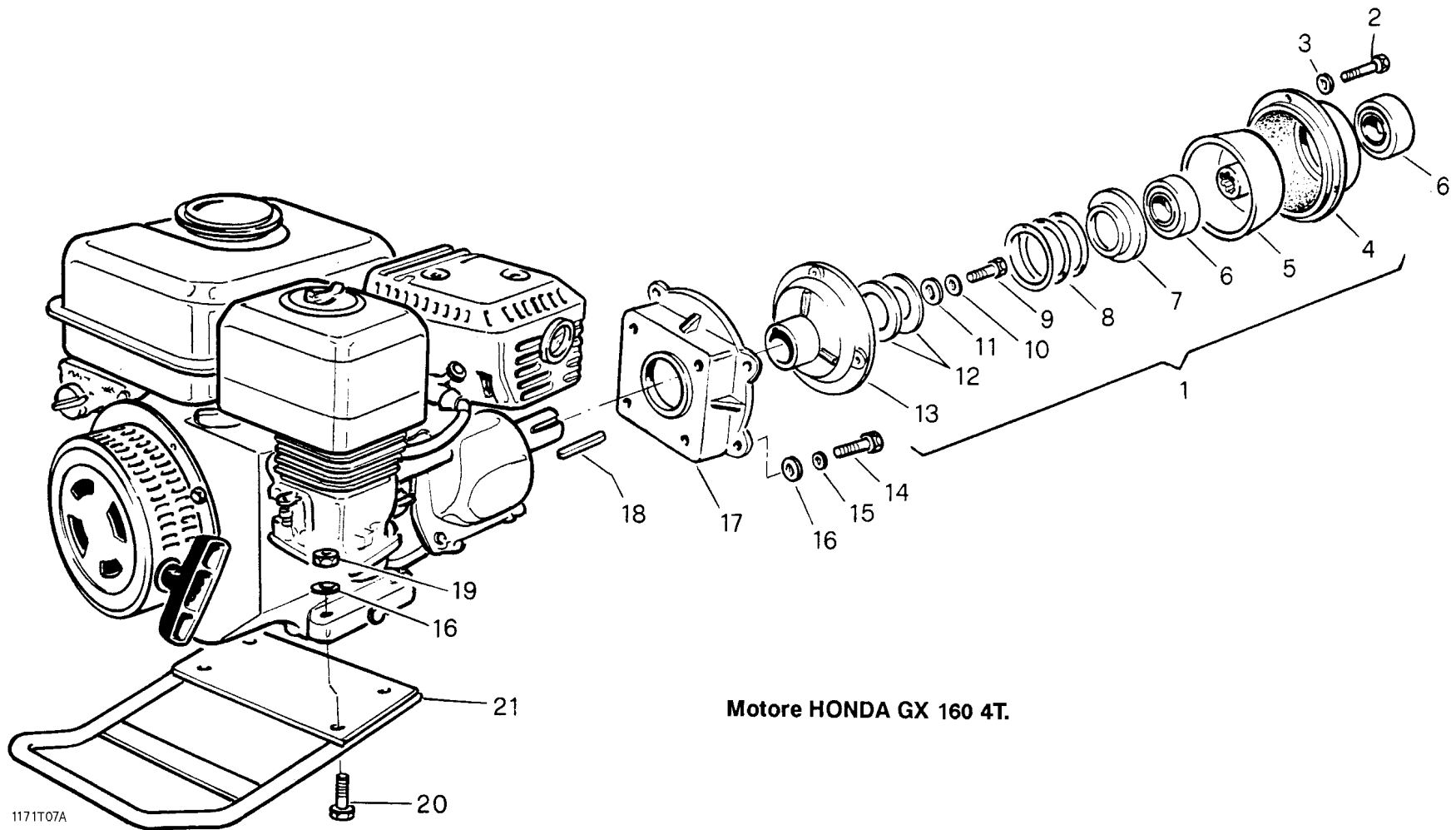
Motore INTERMOTOR LGA 225 - 4T.



Tab. 6 – ACCESSORI (RUGGERINI - INTERMOTOR) – IMPLEMENTS – ACCESSOIRES – NEBENSÄCHLICHKEITEN

REF.	Q.	COD.	DESCRIZIONE	DESCRIPTION	DESCRIPTION	BENENNUNG
01	01	19900222	CUSCINETTO	BEARING	ROULEMENT	LAGER
02	01	14610354	FRIZIONE CONICA	CLUTCH	EMBAYAGE	KUPPLUNG
03	04	19955273	ROSETTA ELASTICA	SPRING WASHER	RONDELLE ELASTIQUE	FEDERSCHEIBE
04	04	19952123	VITE	SCREW	VIS	SCHRAUBE
05	01	15007008	PARAURTI	BUMPER	PARE-CHOCS	STOSSTANGE
06	03	19952729	VITE	SCREW	VIS	SCHRAUBE
07	01	15007020	PARAURTI	BUMPER	PARE-CHOCS	STOSSTANGE
08	01	19954045	DADO	NUT	ECROU	MUTTER

Tab. 7 – ACCESSORI (HONDA) – IMPLEMENTS – ACCESSOIRES – NEBENSÄCHLICHKEITEN



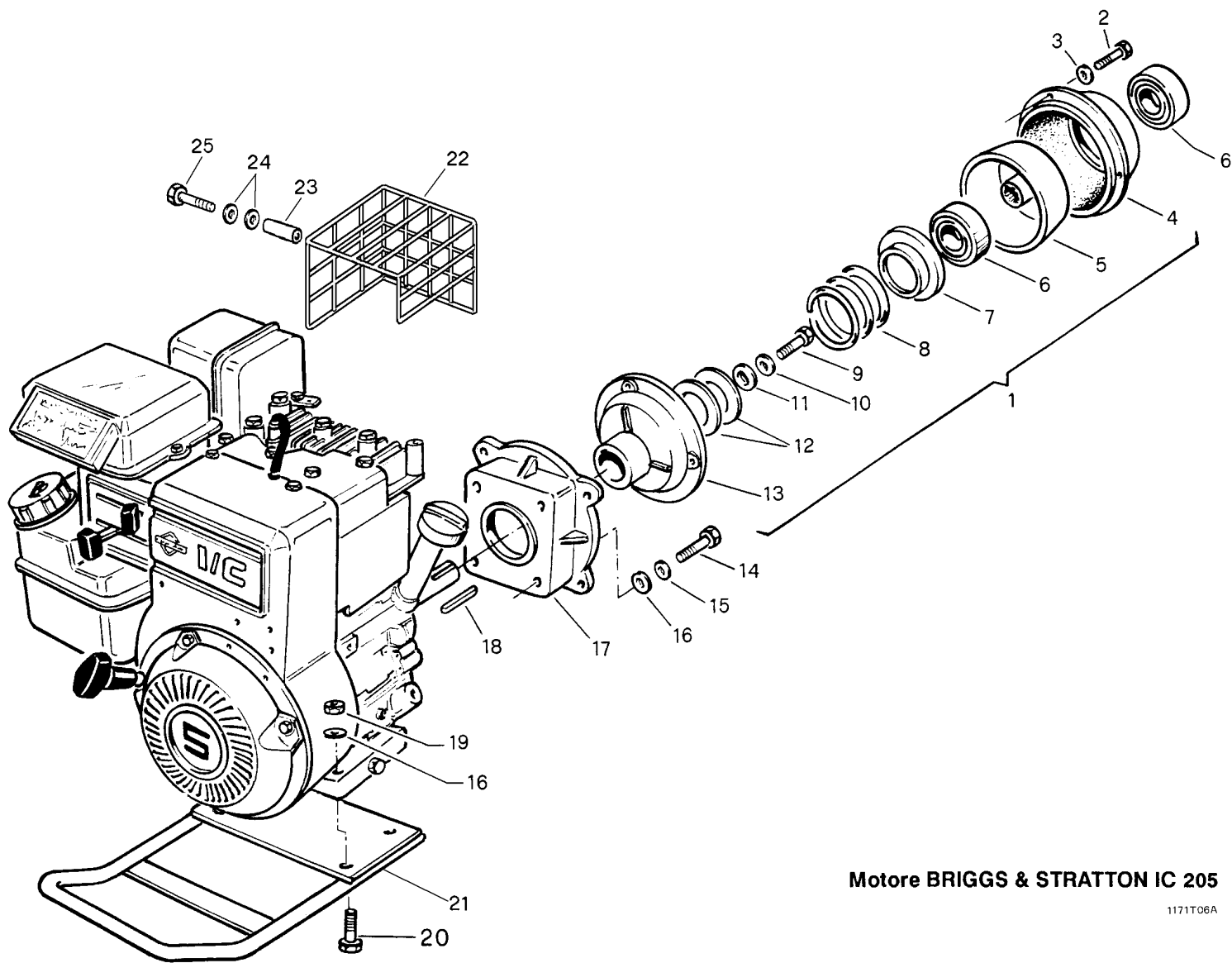
Motore HONDA GX 160 4T.

1171T07A

Tab. 7 – ACCESSORI (HONDA) – IMPLEMENTS – ACCESSOIRES – NEBENSÄCHLICHKEITEN

REF.	Q.	COD.	DESCRIZIONE	DESCRIPTION	DESCRIPTION	BENENNUNG
01	01	12337105	GRUPPO FRIZIONE	CLUTCH ASS.Y	EMBRAYAGE COMPLET	KUPPLUNGSGRUPPE
02	03	19952127	VITE	SCREW	VIS	SCHRAUBE
03	03	19955306	RONDELLA ELASTICA	PLAIN WASHER	RONDELLE	SCHEIBE
04	01	15052044	CAMPANA CON FERODO	LINED PLATE	CLOCHE A FERODO	REIBUNGSSGLOCKE
05	01	15053045	CAMPANA CONDOTTA	DRIVEN PLATE	CLOCHE ENTRAINEE	ANTRIEBSGLOCKE
06	02	19900222	CUSCINETTO	BEARING	ROULEMENT	LAGER
07	01	15055046	BUSSOLA	BUSH	DOUILLE	BÜCHSE
08	01	15767140	MOLLA	SPRING	RESSORT	SPRINGFEDER
09	01	19950106	VITE	SCREW	VIS	SCHRAUBE
10	01	19955408	ROSETTA ELASTICA	SPRING WASHER	RONDELLE ELASTIQUE	FEDERSCHEIBE
11	01	19955009	RONDELLA PIANA	PLAIN WASHER	RONDELLE	SCHEIBE
12	02	19956059	SPESSORE	SHIM	CALE D'EPAISSEUR	DISTANZSCHEIBE
13	01	15542039	FLANGIA	FLANGE	BRIDE	FLANSCH
14	04	19950105	VITE	SCREW	VIS	SCHRAUBE
15	04	19955308	ROSETTA ELASTICA	SPRING WASHER	RONDELLE ELASTIQUE	FEDERSCHEIBE
16	08	19955052	RONDELLA	PLAIN WASHER	RONDELLE	SCHEIBE
17	01	15572005	FLANGIA	FLANGE	BRIDE	FLANSCH
18	01	19956347	CHIAVETTA	KEY	CLAVETTE	KEIL
19	02	19954254	DADO	NUT	ECROU	MUTTER
20	04	19952608	VITE	SCREW	VIS	SCHRAUBE
21	01	15007038	PARAURTI	BUMPER	PARE-CHOCS	STOSSTANGE

Tab. 8 – ACCESSORI (BRIGGS & STRATTON) – IMPLEMENTS – ACCESSOIRES – NEBENSÄCHLICHKEITEN



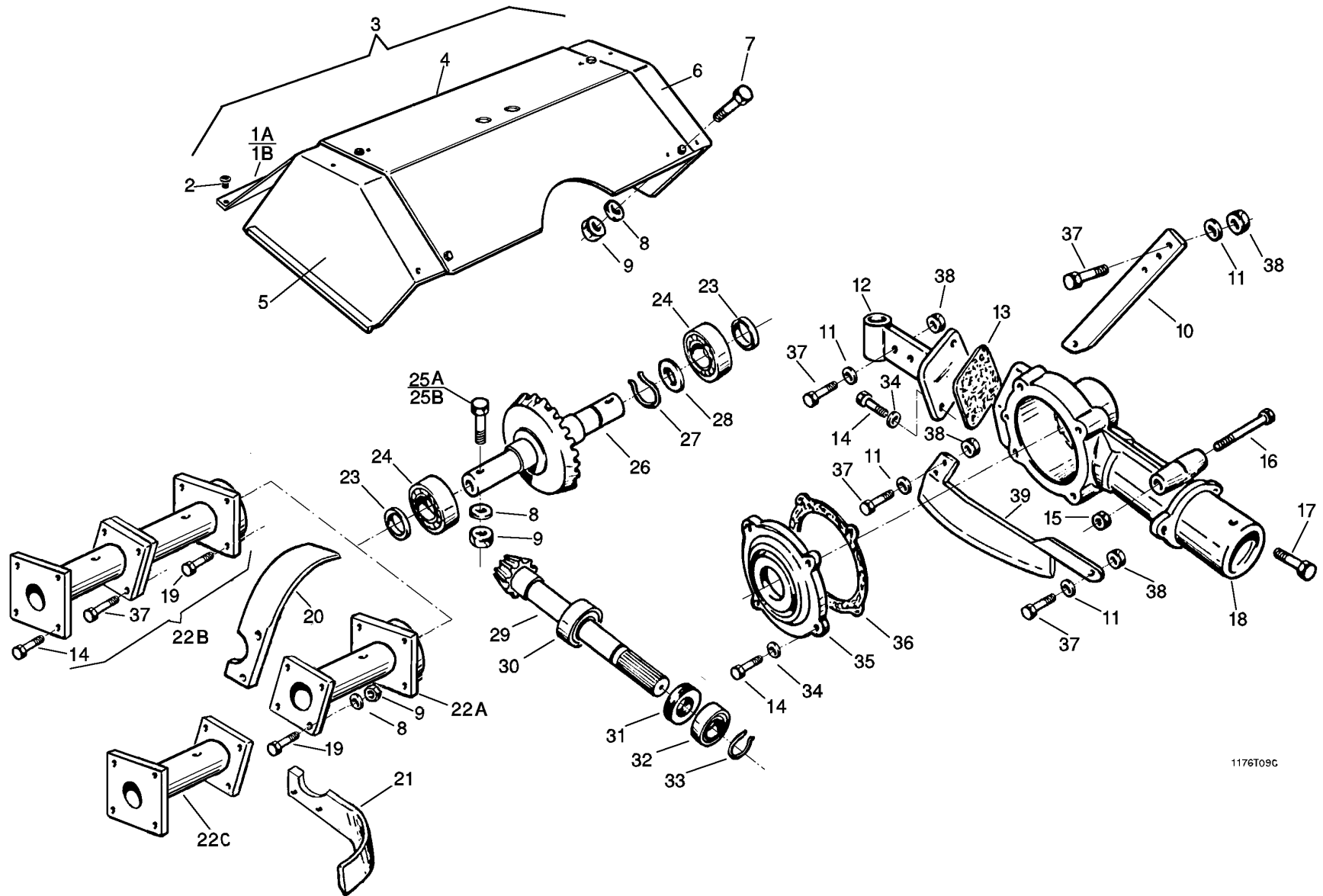
Motore BRIGGS & STRATTON IC 205

1171T06A

Tab. 8 – ACCESSORI (BRIGGS & STRATTON) – IMPLEMENTS – ACCESSOIRES – NEBENSÄCHLICHKEITEN

REF.	Q.	COD.	DESCRIZIONE	DESCRIPTION	DESCRIPTION	BENENNUNG
01	01	12337105	GRUPPO FRIZIONE	CLUTCH ASS.Y	EMBRAYAGE COMPLET	KUPPLUNGSGRUPPE
02	03	19952127	VITE	SCREW	VIS	SCHRAUBE
03	03	19955306	RONDELLA ELASTICA	PLAIN WASHER	RONDELLE	SCHEIBE
04	01	15052044	CAMPANA CON FERODO	LINED PLATE	CLOCHE A FERODO	REIBUNGSSGLOCKE
05	01	15053045	CAMPANA CONDOTTA	DRIVEN PLATE	CLOCHE ENTRAINEE	ANTRIEBSGLOCKE
06	02	19900222	CUSCINETTO	BEARING	ROULEMENT	LAGER
07	01	15055046	BUSSOLA	BUSH	DOUILLE	BÜCHSE
08	01	15767140	MOLLA	SPRING	RESSORT	SPRINGFEDER
09	01	19950106	VITE	SCREW	VIS	SCHRAUBE
10	01	19955408	ROSETTA ELASTICA	SPRING WASHER	RONDELLE ELASTIQUE	FEDERSCHEIBE
11	01	19955009	RONDELLA PIANA	PLAIN WASHER	RONDELLE	SCHEIBE
12	02	19956059	SPESSORE	SHIM	CALE D'EPAISSEUR	DISTANZSCHEIBE
13	01	15542039	FLANGIA	FLANGE	BRIDE	FLANSCH
14	04	19950105	VITE	SCREW	VIS	SCHRAUBE
15	04	19955308	ROSETTA ELASTICA	SPRING WASHER	RONDELLE ELASTIQUE	FEDERSCHEIBE
16	08	19955052	RONDELLA	PLAIN WASHER	RONDELLE	SCHEIBE
17	01	15572005	FLANGIA	FLANGE	BRIDE	FLANSCH
18	01	19956347	CHIAVETTA	KEY	CLAVETTE	KEIL
19	02	19954254	DADO	NUT	ECROU	MUTTER
20	04	19952608	VITE	SCREW	VIS	SCHRAUBE
21	01	15007038	PARAURTI	BUMPER	PARE-CHOCS	STOSSTANGE
22	01	14610218	PROTEZIONE	GUARD	PROTECTION	SCHUTZ
23	01	15765128	DISTANZIALE	SHIM	CALE D'EPAISSEUR	DISTANZSCHEIBE
24	02	19955015	RONDELLA	PLAIN WASHER	RONDELLE	SCHEIBE
25	01	19953106	VITE	SCREW	VIS	SCHRAUBE

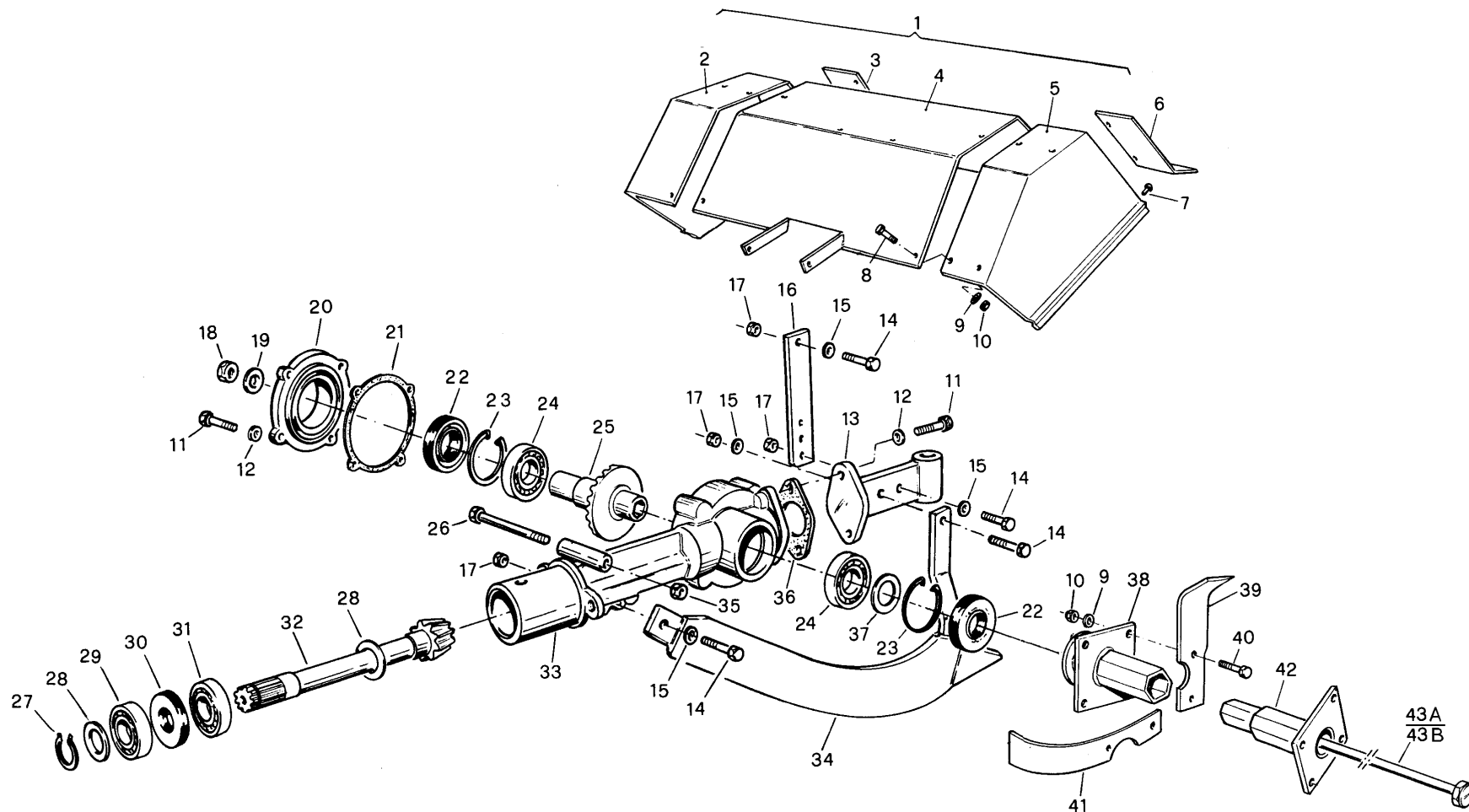
Tab. 9 - GRUPPO FRESA (4 T. - MICRO DIESEL) - TILLER - FRAISE - FRÄSE



Tab. 9 – GRUPPO FRESA (4 T. – MICRO DIESEL) – TILLER – FRAISE – FRÄSE

REF.	Q.	COD.	DESCRIZIONE	DESCRIPTION	DESCRIPTION	BENENNUNG
01a	01	15765090	PANNELLO DX	PANEL (R.H.)	PANNEAU DROITE	TAFEL RECHTS
01b	01	15769091	PANNELLO SX	PANEL (L.H.)	PANNEAU GAUCHE	TAFEL LINKS
02	02	14680600	PARACOLPI	BUFFER	BOUTOIR	PUFFER
03	01	15765078	COFANO cm 60 REG.	COVER, ADJ., cm 60	COFFRE cm 60 REG.	HAUBE cm 60 EINSTELLBAR
04	01	15765092	COFANO CENTR.	COVER, TOP	COFFRE MOYEN	MITTELHAUBE
05	01	15765093	PANNELLO LATERALE DX	SIDE PANEL (R.H.)	PANNEAU LATERAL DROITE	SEITENTAFEL RECHTS
06	01	15765094	PANNELLO LATERALE SX	SIDE PANEL (L.H.)	PANNEAU LATERAL GAUCHE	SEITENTAFEL LINKS
07	—	19952715	VITE	SCREW	VIS	SCHRAUBE
08	—	19955273	ROSETTA ELASTICA	SPRING WASHER	RONDELLE ELASTIQUE	FEDERSCHEIBE
09	—	19954045	DADO	NUT	ECROU	MUTTER
10	01	15545081	ASTA	ROD	TIGE	STANGE
11	04	19955052	RONDELLA	PLAIN WASHER	RONDELLE	SCHEIBE
12	01	15201006	SUPPORTO	SUPPORT	SUPPORT	HALTERUNG
13	01	15206068	GUARNIZIONE	GASKET	JOINT	DICHTUNG
14	—	19952721	VITE	SCREW	VIS	SCHRAUBE
15	01	19954255	DADO	NUT	ECROU	MUTTER
16	01	19952663	VITE	SCREW	VIS	SCHRAUBE
17	01	19952109	VITE	SCREW	VIS	SCHRAUBE
18	01	15541006	GAMBO	TIGE	TIGE	SCHAFT
19	—	19952729	VITE	SCREW	VIS	SCHRAUBE
20	—	15035038	LAMA SINISTRA	BLADE, LEFT	LAME GAUCHE	KLINGE, LINKS
21	—	15035043	LAMA DESTRA	BLADE, RIGHT	LAME DROITE	KLINGE, RECHTS
22a	02	15765095	SUPPORTO DOPPIO S / LAME	DOUBLE SUPPORT W/O BLADES	DOUBLE SUPPORT SANS LAMES	DOPPELHALTERUNG OHNE MESS.
22b	02	15765096	SUPPORTO TRIPLO S / LAME	TRIPLE SUPPORT W/O BLADES	TRIPLE SUPPORT SANS LAMES	DREIFACHALTERUNG OHNE MESS.
22c	02	15765102	ALLARGAMENTO S / LAME	EXTENDER W/O BLADES	RALLONGE SANS LAMES	VERLÄNGERUNG OHNE MESSER
23	01	19921038	ANELLO DI TENUTA	SEAL RING	BAGUE D'ETANCHEITE	DICHTRING
24	01	19900231	CUSCINETTO	BEARING	ROULEMENT	LAGER
25a	02	19952617	VITE (8MA)	SCREW (8MA)	VIS (8MA)	SCHRAUBE (8MA)
25b	02	19952618	VITE (10MA)	SCREW (10MA)	VIS (10MA)	SCHRAUBE (10MA)
26	01	15544042	ALBERO	SHAFT	ARBRE	WELLE
27	01	19955530	ANELLO ELASTICO	LOCKRING	ARRETOIR	SICHERUNGSRING
28	01	19956044	SPESSORE	THICKNESS	CALE D'EPAISSEUR	DISTANZSCHEIBE
29	01	15544040	PIGNONE	PINION	PIGNON	RITZEL
30	01	19901004	CUSCINETTO	BEARING	ROULEMENT	LAGER
31	01	19922115	ANELLO DI TENUTA	SEAL RING	BAGUE D'ETANCHEITE	DICHTRING
32	01	19900222	CUSCINETTO	BEARING	ROULEMENT	LAGER
33	01	19955520	ANELLO ELASTICO	LOCKRING	ARRETOIR	SICHERUNGSRING
34	06	19955408	ANELLO ELASTICO	LOCKRING	ARRETOIR	SICHERUNGSRING
35	01	15201007	COPERCHIO	COVER	COUVERCLE	DECKEL
36	01	15056009	GUARNIZIONE	GASKET	JOINT	DICHTUNG
37	—	19952737	VITE	SCREW	VIS	SCHRAUBE
38	04	19954208	DADO	NUT	ECROU	MUTTER
39	01	15545060	COLTRO	COULTER	COUTRE	PFLUGMESSER

Tab. 10 – GRUPPO FRESA (DIESEL) - TILLER - FRAISE - FRÄSE



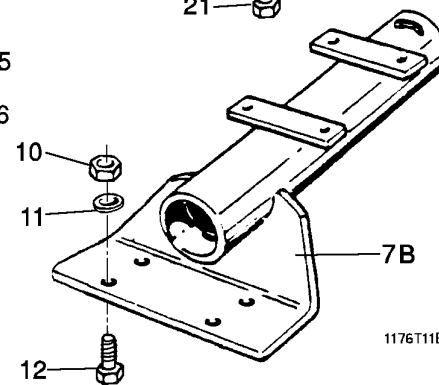
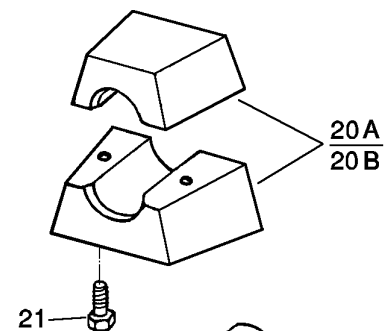
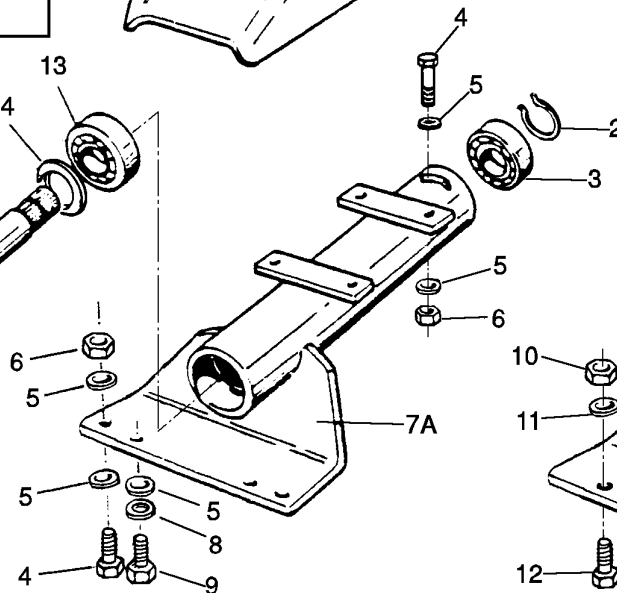
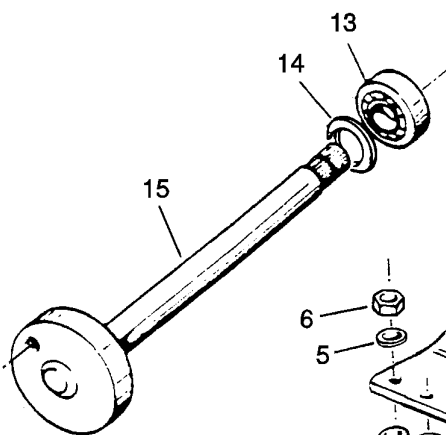
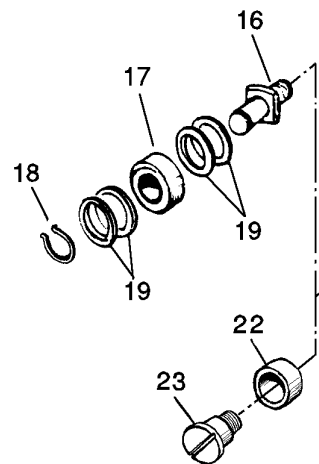
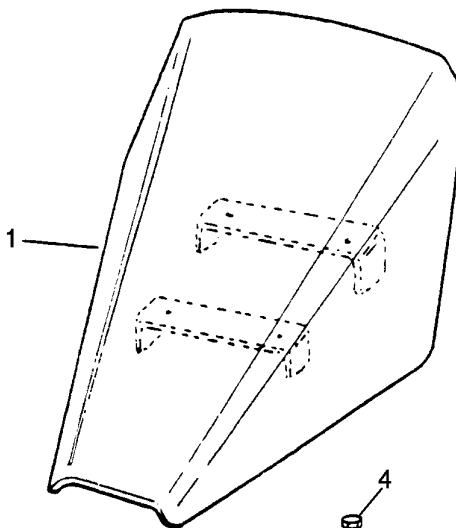
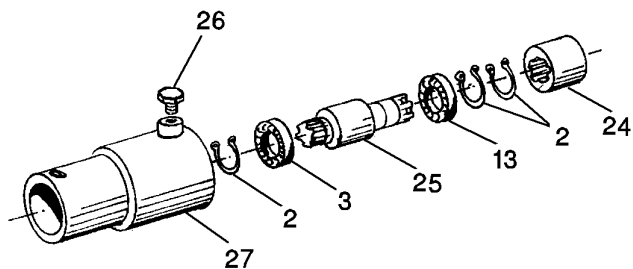
1176T10A

Tab. 10 – GRUPPO FRESA (DIESEL) - TILLER - FRAISE - FRÄSE

REF.	Q.	COD.	DESCRIZIONE	DESCRIPTION	DESCRIPTION	BENENNUNG
01	01	15765089	COFANO	COVER	COFFRE	HAUBE
02	01	15765093	PANNELLO DX	PANEL (R.H.)	PANNEAU DROITE	TAFEL RECHTS
03	01	15765090	BANDINELLA DX	MUDGUARD (R.H.)	GARDE-BOUE DROITE	KOTFLÜGEL RECHTS
04	01	15765099	COFANO CENTR.	COVER, CENTRAL	COFFRE MOYEN	MITTELHAUBE
05	01	15765094	PANNELLO SX	PANEL (L.H.)	PANNEAU GAUCHE	TAFEL LINKS
06	01	15765091	BANDINELLA SX	MUDGUARD (L.H.)	GARDE-BOUE GAUCHE	KOTFLÜGEL LINKS
07	02	14680600	PARACOLPI	BUFFER	BOUTOIR	PUFFER
08	—	19952715	VITE	SCREW	VIS	SCHRAUBE
09	—	19955273	RONDELLA	PLAIN WASHER	RONDELLE	SCHEIBE
10	—	19954045	DADO	NUT	ECROU	MUTTER
11	06	19952721	VITE	SCREW	VIS	SCHRAUBE
12	06	19955408	ROSETTA ELASTICA	SPRING WASHER	RONDELLE ELASTIQUE	FEDERSCHEIBE
13	01	15201006	SUPPORTO	SUPPORT	SUPPORT	HALTERUNG
14	04	19952737	VITE	SCREW	VIS	SCHRAUBE
15	04	19955052	RONDELLA	PLAIN WASHER	RONDELLE	SCHEIBE
16	01	15015062	ASTA	ROD	TIGE	STANGE
17	04	19954208	DADO	NUT	ECROU	MUTTER
18	01	19954212	DADO	NUT	ECROU	MUTTER
19	01	15175127	RONDELLA	PLAIN WASHER	RONDELLE	SCHEIBE
20	01	15762100	COPERCHIO	COVER	COUVERCLE	DECKEL
21	01	15056009	GUARNIZIONE	GASKET	JOINT	DICHTUNG
22	02	19921050	ANELLO DI TENUTA	SEAL RING	BAGUE D'ETANCHEITE	DICHTRING
23	02	19955662	ANELLO ELASTICO	LOCKRING	ARRETOIR	SICHERUNGSRING
24	02	19900235	CUSCINETTO	BEARING	ROULEMENT	LAGER
25	01	15764071	ALBERO	SHAFT	ARBRE	WELLE
26	01	19952663	VITE	SCREW	VIS	SCHRAUBE
27	01	19955520	ANELLO ELASTICO	LOCKRING	ARRETOIR	SICHERUNGSRING
28	02	19956029	SPESSORE	THICKNESS	CALE D'EPAISSEUR	DISTANZSCHEIBE
29	01	19900222	CUSCINETTO	BEARING	ROULEMENT	LAGER
30	01	19922115	ANELLO DI TENUTA	SEAL RING	BAGUE D'ETANCHEITE	DICHTRING
31	01	19901004	CUSCINETTO	BEARING	ROULEMENT	LAGER
32	01	15174033	PIGNONE	PINION	PIGNON	RITZEL
33	01	15761040	GAMBO	TIGE	TIGE	SCHAFT
34	01	15765111	COLTRO	COULTER	COUTRE	PFLUGMESSER
35	01	19954255	DADO	NUT	ECROU	MUTTER
36	01	15206068	GUARNIZIONE	GASKET	JOINT	DICHTUNG
37	01	19956047	SPESSORE	THICKNESS	CALE D'EPAISSEUR	DISTANZSCHEIBE
38	02	15765097	SUPPORTO SENZA LAME	SUPPORT WITHOUT BLADES	SUPPORT SANS LAMES	HALTERUNG OHNE MESS.
39	—	15455017	LAMA SINISTRA	BLADE, LEFT	LAME GAUCHE	KLINGE, LINKS
40	—	19952729	VITE	SCREW	VIS	SCHRAUBE
41	—	15455019	LAMA DESTRA	BLADE, RIGHT	LAME DROITE	KLINGE, RECHTS
42	02	15765098	SUPPORTO SENZA LAME	SUPPORT WITHOUT BLADES	SUPPORT SANS LAMES	HALTERUNG OHNE MESS.
43a	01	15765112	TIRANTE cm 46	STAY ROD cm 46	TIRANT cm 46	SPANNBOLZEN cm46
43b	01	15765113	TIRANTE cm 30	STAY ROD cm 30	TIRANT cm 30	SPANNBOLZEN cm30

Tab. 11 - AZIONAMENTO BARRA FALCIANTE - BAR MOVEMENT - MOUVEMENT DE LA BARRE - MÄHBALKEN BETRIEB

PROLUNGA PTO
PTO EXTENSION
RALLONGE PTO
VERLÄNGERUNG PTO

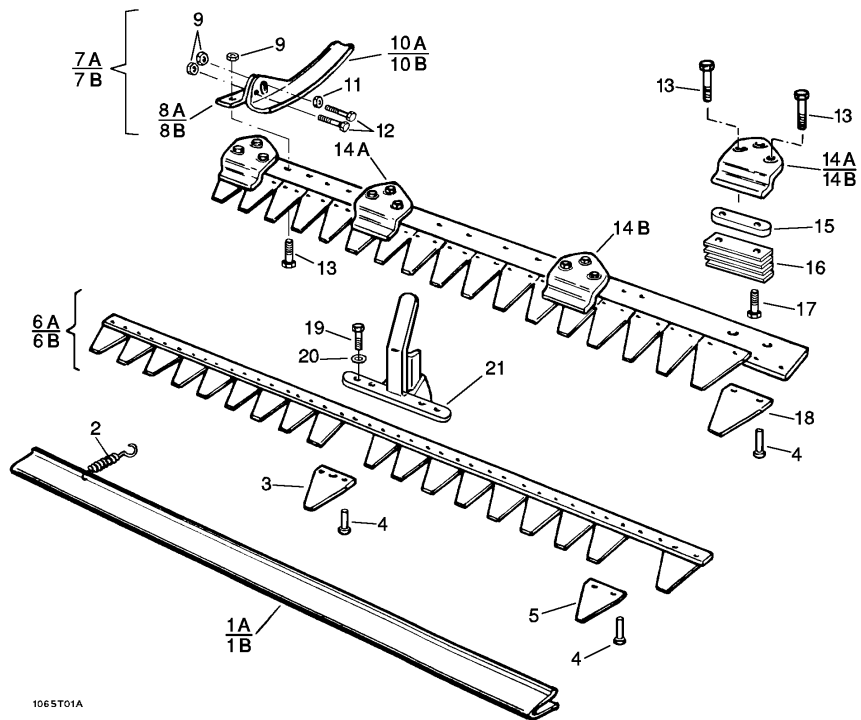


1176T11B

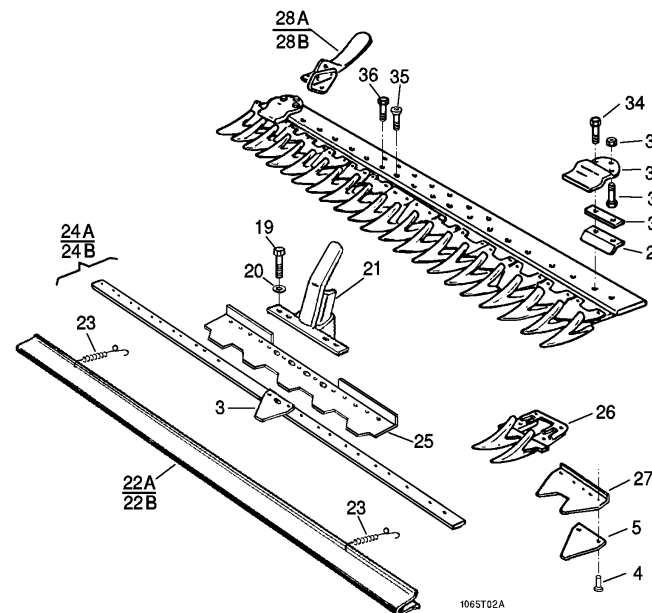
Tab. 11 - AZIONAMENTO BARRA FALCIANTE - BAR MOVEMENT - MOUVEMENT DE LA BARRE - MÄHBALKEN BETRIEB

REF.	Q.	COD.	DESCRIZIONE	DESCRIPTION	DESCRIPTION	BENENNUNG
01	01	15765082	COFANO	COVER	COUVERCLE	HAUBE
02	03	19955520	ANELLO ELASTICO	LOCKRING	ARRETOIR	SICHERUNGSRING
03	02	19900222	CUSCINETTO	BEARING	ROULEMENT	LAGER
04	06	19952729	VITE	SCREW	VIS	SCHRAUBE
05	14	19955052	RONDELLA	PLAIN WASHER	RONDELLE	SCHEIBE
06	06	19954254	DADO	NUT	ECROU	MUTTER
07a	01	15545050	SUPPORTO (ESM)	SUPPORT (ESM)	SUPPORT (ESM)	HALTERUNG (ESM)
07b	01	15545150	SUPPORTO	SUPPORT	SUPPORT	HALTERUNG
08	02	19955273	ROSETTA ELASTICA	SPRING WASHER	RONDELLE ELASTIQUE	FEDERSCHEIBE
09	02	19952721	VITE	SCREW	VIS	SCHRAUBE
10	04	19954255	DADO	NUT	ECROU	MUTTER
11	04	19955053	RONDELLA	PLAIN WASHER	RONDELLE	SCHEIBE
12	04	19952738	VITE	SCREW	VIS	SCHRAUBE
13	02	19900322	CUSCINETTO	BEARING	ROULEMENT	LAGER
14	01	19956029	SPESSORE	THICKNESS	CALE D'EPAISSEUR	DISTANZSCHEIBE
15	01	15545051	ALBERO	SHAFT	ARBRE	WELLE
16	01	15545045	PERNO	PIN	AXE	BOLZEN
17	01	19900411	CUSCINETTO	BEARING	ROULEMENT	LAGER
18	01	19955512	ANELLO ELASTICO	LOCKRING	ARRETOIR	SICHERUNGSRING
19	04	19956002	SPESSORE	THICKNESS	CALE D'EPAISSEUR	DISTANZSCHEIBE
20a	01	15761076	ZAVORRA (PER BENZINA)	BALLAST (FOR GASOLINE)	LEST (POUR ESSENCE)	BALLAST (FÜR BENZIN)
20b	01	15761116	ZAVORRA (PER DIESEL)	BALLAST (FOR DIESEL)	LEST (POUR DIESEL)	BALLAST (FÜR DIESEL)
21	02	19952665	VITE	SCREW	VIS	SCHRAUBE
22	01	15574048	BOCCOLA	BUSH	DOUILLE	BÜCHSE
23	01	15764117	PERNO	PIN	AXE	BOLZEN
24	01	15174028	BOCCOLA	BUSH	DOUILLE	BÜCHSE
25	01	15764108	ALBERO	SHAFT	ARBRE	WELLE
26	01	15765115	VITE	SCREW	VIS	SCHRAUBE
27	01	15765109	MANICOTTO	FITTING	MANCHON	MUFFE

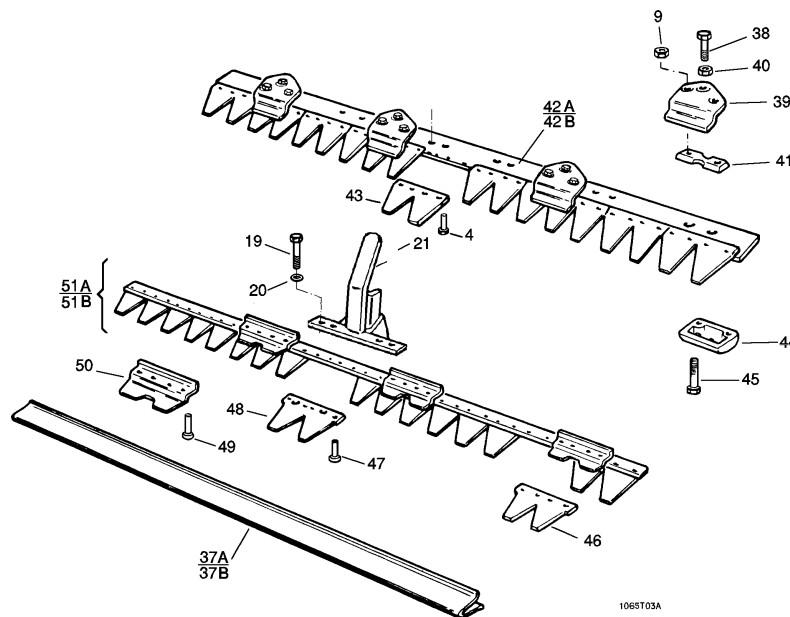
Tab. 12 - BARRE FALCIANTI - MOWING BARS - BARRES DE COUPE - MÄHBALK



1065T01A
MOD. NAZIONALE 92-102 CM



MOD. SEMIFITTA 92-107 CM



MOD. ESM 91-102 CM

1065T03A

Tab. 12 – BARRE FALCIANTI - MOWING BARS - BARRES DE COUPE - MÄHBALKEN

REF.	Q.	COD.	DESCRIZIONE	DESCRIPTION	DESCRIPTION	BENENNUNG
01a	01	14690176	PROTEZIONE DENTI (92 cm)	GUARD (92 cm)	COUVRE-LAME (92 cm)	ZAHNSCHUTZ (92 cm)
01b	01	14690177	PROTEZIONE DENTI (102 cm)	GUARD (102 cm)	COUVRE-LAME (102 cm)	ZAHNSCHUTZ (102 cm)
02	02	14690156	MOLLA	SPRING	RESSORT	SPRINGFEDER
03	—	14690204	SEZIONE LAMA	CUTTING EDGE	SECTION DE LAME	SCHNITTKANTE
04	—	14690501	RIBATTINO	RIVET	RIVET	NIETE
05	—	14690200	SEZIONE LAMA	CUTTING EDGE	SECTION DE LAME	SCHNITTKANTE
06a	01	12310505	LAMA (92 cm)	BLADE (92 cm)	LAME (92 cm)	MESSER (92 cm)
06b	01	12310506	LAMA(102 cm)	BLADE(102 cm)	LAME(102 cm)	MESSER(102 cm)
07a	01	14690163	SLITTA COMPL. DX	SKID, ASS.Y (R.H.)	SEMELLE COMPL. D.	SCHLITTEN KOMPLETT R.
07b	01	14690164	SLITTA COMPL. SX	SKID, ASS.Y (L.H.)	SEMELLE COMPL. G.	SCHLITTEN KOMPLETT L.
08a	01	14690158	SUPPORTO SLITTA DX	SUPPORT, SKID (R.H.)	SUPPORT SEMELLE D.	HALTERUNG SCHLITTEN R.
08b	01	14690159	SUPPORTO SLITTA SX	SUPPORT, SKID (L.H.)	SUPPORT SEMELLE G.	HALTERUNG SCHLITTEN L.
09	—	19954045	DADO	NUT	ECROU	MUTTER
10a	01	14690160	SLITTA DX	SKID (R.H.)	SEMELLE D.	SCHLITTEN R.
10b	01	14690161	SLITTA SX	SKID (L.H.)	SEMELLE G.	SCHLITTEN L.
11	02	19955009	RONDELLA	WASHER	RONDELLE	SCHEIBE
12	04	19952721	VITE	SCREW	VIS	SCHRAUBE
13	—	19952729	VITE	SCREW	VIS	SCHRAUBE
14a	01	14690178	PREMILAMA DX	BRACKET R.H.	SERRE- LAME D.	PRESSBLATT R.
14b	01	14690179	PREMILAMA SX	BRACKET L.H.	SERRE- LAME G.	PRESSBLATT L.
15	—	14690171	BLOCCETTO	BLOCK	BLOCHET	BLOCK
16	—	14690172	PIASTRINA	PLATE	PLAQUE	PLATTE
17	—	14690173	VITE	SCREW	VIS	SCHRAUBE
18	—	14690149	DENTE	TOOTH	DENT	ZAHN
19	04	19952715	VITE	SCREW	VIS	SCHRAUBE
20	04	19955273	ROSETTA ELASTICA	SPRING WASHER	RONDELLE ELAST.	FEDERSCHEIBE
21	—	15545070	GUIDALAMA	BLADE DRIVER	GUIDE-LAME	MESSERFÜHRUNG
22a	01	14690726	PROTEZIONE DENTI (92 cm)	GUARD (92 cm)	COUVRE-LAME (92 cm)	ZAHNSCHUTZ (92 cm)
22b	01	14690723	PROTEZIONE DENTI (107 cm)	GUARD (107 cm)	COUVRE-LAME (107 cm)	ZAHNSCHUTZ (107 cm)
23	02	14690157	MOLLA	BRACKET	SERRE-LAME	PRESSBLATT
24a	01	12310921	LAMA (92 cm)	BLADE (92 cm)	LAME (92 cm)	MESSER (92 cm)
24b	01	12310930	LAMA (107 cm)	BLADE (107 cm)	LAME (107 cm)	MESSER (107 cm)
25	01	14690221	PIASTRINA CENTRALE	CENTRAL PLATE	PLAQUE CENTRALE	PLATTE
26	—	14690102	DENTE DOPPIO	DOUBLE TOOTH	DENT DOUBLE	DOPPELZAHN
27	02	14690212	PIASTRINA	PLATE	PLAQUE	PLATTE
28a	01	14690907	SLITTA DX	SKID, (R.H.)	SEMELLE D.	SCHLITTEN R.
28b	01	14690908	SLITTA SX	SKID, (L.H.)	SEMELLE G.	SCHLITTEN L.
29	—	14690214	GUIDALAMA	BLADE DRIVE	GUIDE-LAME	MESSERFÜHRUNG
30	—	14690216	PIASTRINA	PLATE	PLAQUE	PLATTE
31	—	19952716	VITE	SCREW	VIS	SCHRAUBE
32	—	14690306	PREMILAMA	BRACKET	SERRE-LAME	PRESSBLATT
33	—	19954077	DADO	NUT	ECROU	MUTTER
34	—	19952748	VITE	SCREW	VIS	SCHRAUBE
35	02	19952334	VITE	SCREW	VIS	SCHRAUBE
36	—	19952730	VITE	SCREW	VIS	SCHRAUBE

Tab. 12 – BARRE FALCIANTI - MOWING BARS - BARRES DE COUPE - MÄHBALKEN

REF.	Q.	COD.	DESCRIZIONE	DESCRIPTION	DESCRIPTION	BENENNUNG
37a	01	14690719	PROTEZIONE DENTI (91 cm)	GUARD (91 cm)	COUVRE-LAME (91 cm)	ZAHNSCHUTZ (91 cm)
37b	01	14690717	PROTEZIONE DENTI (102 cm)	GUARD (102 cm)	COUVRE-LAME (102 cm)	ZAHNSCHUTZ (102 cm)
38	—	19952737	VITE	SCREW	VIS	SCHRAUBE
39	—	14690307	PREMILAMA	BRACKET	SERRE-LAME	PRESSBLATT
40	—	14690215	DADO	NUT	ECROU	MUTTER
41	—	14690310	BLOCCHETTO	BLOCK	BLOCHET	BLOCK
42a	01	14690321	ASTA (91 cm)	ROD (91 cm)	TIGE (91 cm)	STANGE (91 cm)
42b	01	14690322	ASTA (102 cm)	ROD (102 cm)	TIGE (102 cm)	STANGE (102 cm)
43	—	14690315	SEZIONE DOPPIA	DOUBLE EDGE	DOUBLE SECTION	DOPPELSCHNITTK.
44	—	14690312	SLITTA	SKID	SEMELLE	SCHLITTEN
45	—	19952617	VITE	SCREW	VIS	SCHRAUBE
46	—	14690314	SEZIONE DOPPIA	DOUBLE EDGE	DOUBLE SECTION	DOPPELSCHNITTK.
47	—	14690502	RIBATTINO	RIVET	RIVET	NIETE
48	—	14690313	SEZIONE DOPPIA	DOUBLE EDGE	DOUBLE SECTION	DOPPELSCHNITTK.
49	—	14690503	RIBATTINO	RIVET	RIVET	NIETE
50	—	14690210	PIASTRINA	PLATE	PLAQUE	PLATTE
51a	01	12310909	LAMA (91 cm)	BLADE (91 cm)	LAME (91 cm)	MESSER (91 cm)
51b	01	12310914	LAMA (102 cm)	BLADE (102 cm)	LAME (102 cm)	MESSER (102 cm)